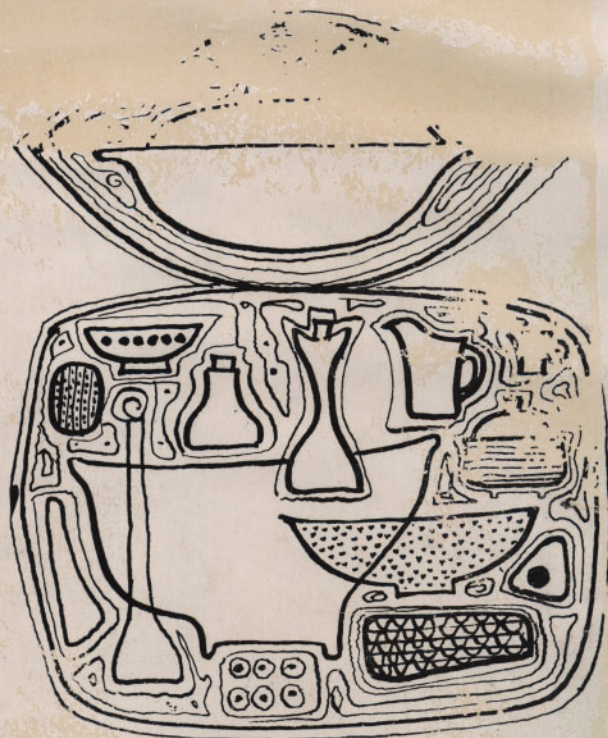


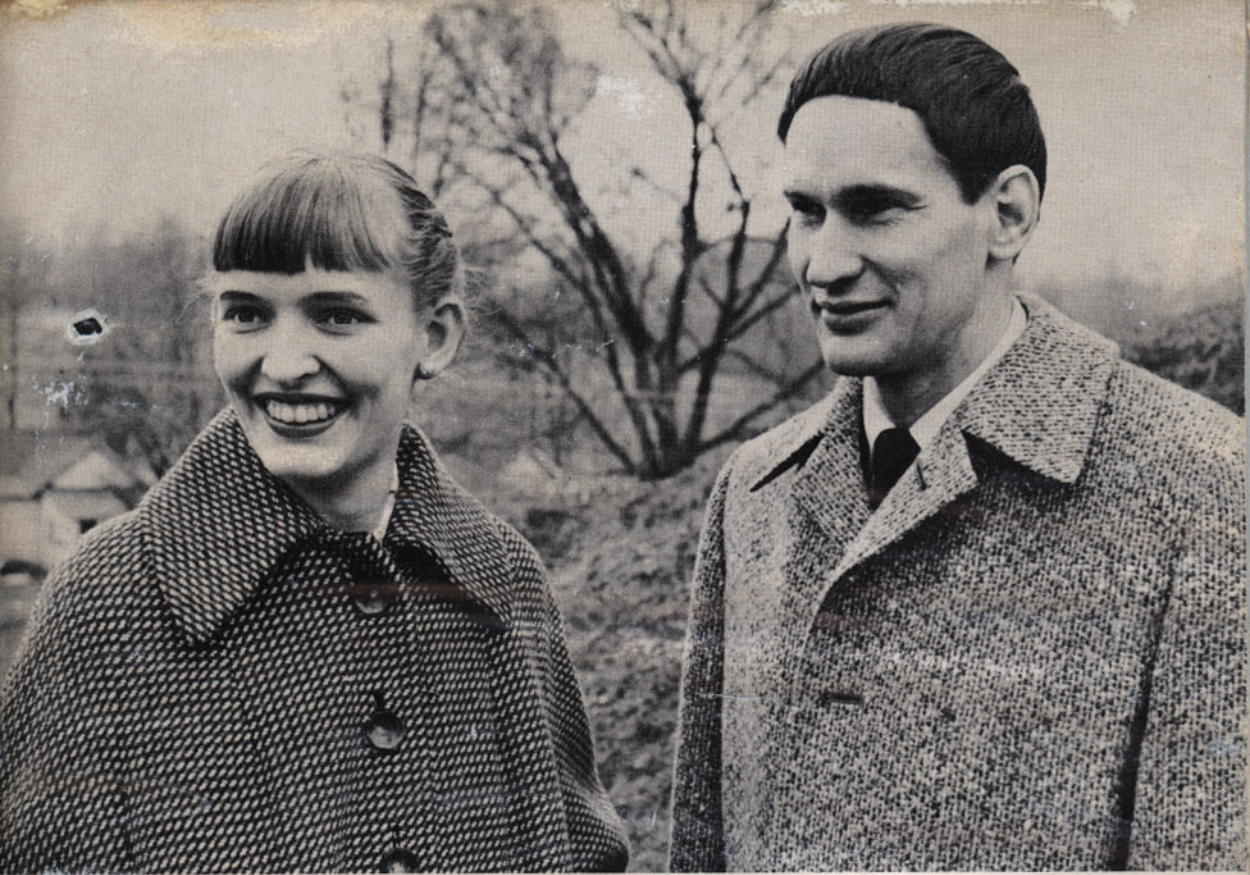
SIGMA TAPE CATALOG No. 7

accessories

tables



MARSHALL STUDIOS, INC.
VEEDERSBURG, INDIANA




Jane and Gordon Martz, the designers of the stoneware lamps and accessories, attended Alfred University, the New York State College of Ceramics.

In the summer of 1951, after leaving Alfred, they came to Veedersburg and built a new kiln and kiln building as an addition to Marshall Studios, Inc., a family business since 1922, specializing in hand-made lampshades. Lamps using Marshall shades were immediately a large part of their business.

The response since the beginning has been gratifying, and the pottery has grown steadily—in 1952 another kiln was added, and in 1954 an additional building and a large kiln with much greater capacity was installed to supply the increasing demand.

The function of each piece is carefully considered in designing, forming useful pieces of tableware not ordinarily found in dinnerware sets.



Lamp M153-30
height 26 1/2"
matte dark brown
retail \$20.00

Shade FCB230/B
16" neo drum
brown and yellow gauze
retail \$10.00

complete \$30.00