

ceramics

jane & gordon MARTZ

spring 1953
accessories and lamps

marshall studios, inc.

introducing our related pitcher set

awarded
GOOD DESIGN
for Spring 1953



Large tumbler, M74-45, 5½" high 3¼" dia., matte black glaze, 1.50 ea - Large pitcher, M69-45, 12" high 6" dia., matte black glaze, 12.50 - Small cup, M75-30, 3" high 2½" dia. matte dark brown glaze, 0.80 ea - Medium pitcher, M70-30, 8" high 5" dia., matte dark brown glaze, 6.50 - Cream pitcher, M71-30, 4" high 3½" dia., matte dark brown glaze, 3.00 - Sugar bowl, M76-30, 4" high 4" dia., matte dark brown glaze, 3.00 - Large salt and peppers, M72-45 and M72-28, 3½" high, salt matte white and pepper matte black, 2.00 pr. - Small salt and peppers, M73-28 and M73-45, 2½" high, salt matte white and pepper matte black, 1.60 pr - Vinegar bottle, M77-45, 7½" high 2½" dia., matte black glaze, 2.50

a few words might be said for FUNCTION

large pitcher holds one gallon and fills eight of the twelve ounce tumblers

medium pitcher holds over one quart and fills eight small cups

salt and peppers pour well - rings in corks prevent cork from being pushed into shaker and aid in removing cork

spouts designed for ease of pouring and for a minimum of dripping

rims of tumblers allow for easy drinking

washing of pitchers is convenient - the hand may easily reach the bottom of the ware

ALL PRICES SHOWN ARE AT RETAIL



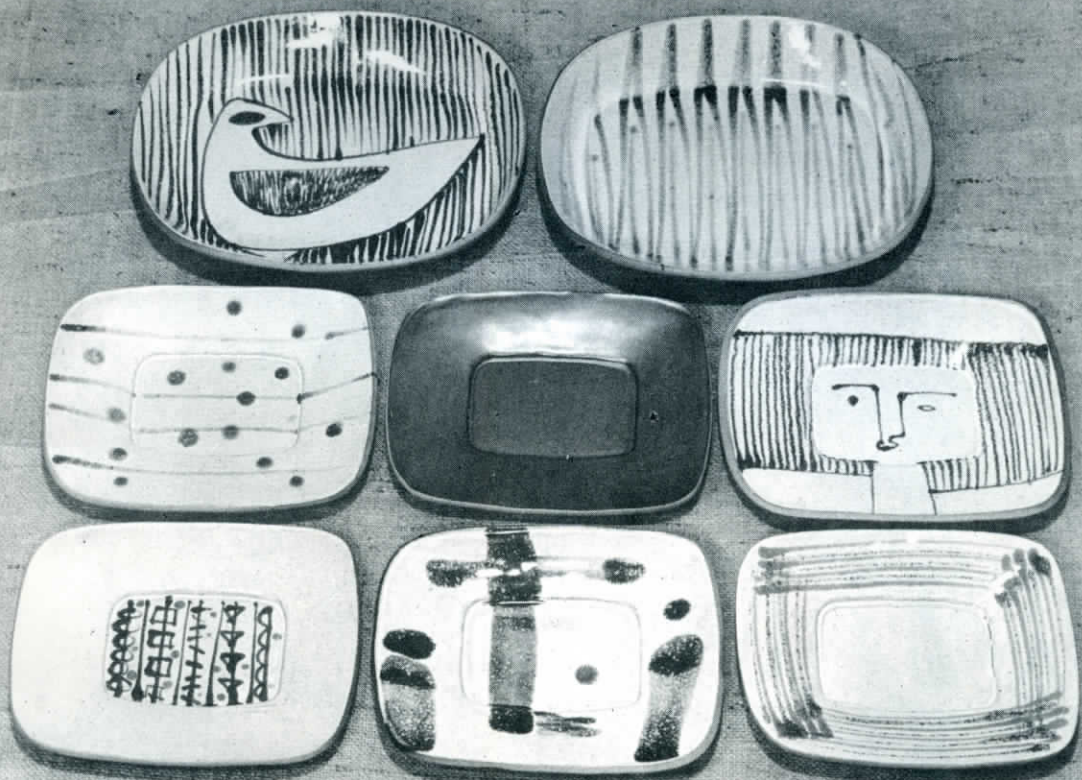
Tea pot, M36-31, 5" high, 5½" dia, 10.00 - Vinegar bottle, M48-28-31, 7" high 3" dia, 3.50 - Large tumbler, M34-31, 4" high, 1.50ea. - Large pitcher, M17-31 10" high, 7.50 - Small cup, M35-28, 3" high, 1.00 ea. - Small salt and peppers, M23-28, 3" high, 1.50 pr. - Large salt and peppers, M22-28, 4½" high, 2.00 pr. Sugar bowl, M24-31, 4½" high, 4.00 - Cream pitcher, M21-31, 4½" high, 4.00



Top row - Pressed fish tray with dark background, slip trailed decoration, P11-25, 9" long 6" wide, 4.00 - Pressed fish tray with light background, slip trailed decoration, P11-23, 9" long 6" wide, 4.00 - Middle row - Pressed tray with underglaze decoration, P10-11-15, 6½" long, 2.00 - Pressed tray with underglaze decoration, P10-11-16, 6½" long, 2.00 - Pressed tray with underglaze decoration, P10-11-17, 6½" long, 2.00 - Pressed tray with underglaze decoration, P10-11-20, 6½" long, 2.00 - Bottom row - Pressed tray, P8-11-2, 3½" dia, 2.00 - Pressed tray, P8-11-10, 3½" dia, 2.00 - Pressed tray, P37-5, 4" square, 2.00 - Pressed tray, P37-9, 4" square, 2.00 - Pressed tray, P37-8, 4" square, 2.00

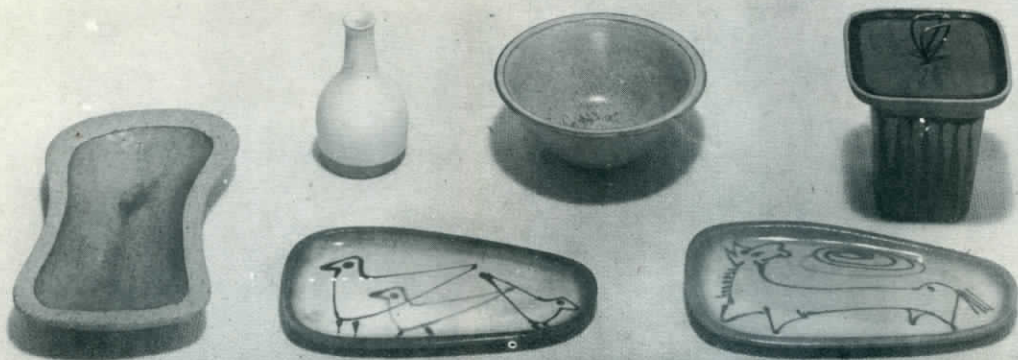


Top row, left to right - Ash tray, M6-33, 9" long, 7.50 - Ash tray, M53-31, 10" long, 7.50 - Molded bowl, M12-33, 14" long, 15.00 Bottom row, left to right - Ash tray, M4-35, 6 $\frac{1}{2}$ " long, 7.50 - Ash tray, M3-45, 4 $\frac{1}{2}$ " dia., 3.50 - Ash tray, M1-28, 6" long, 5.00 - Ash tray, M86-45, 5" dia., 3.00 - Ash tray, M5-30, 6" long, 3.50

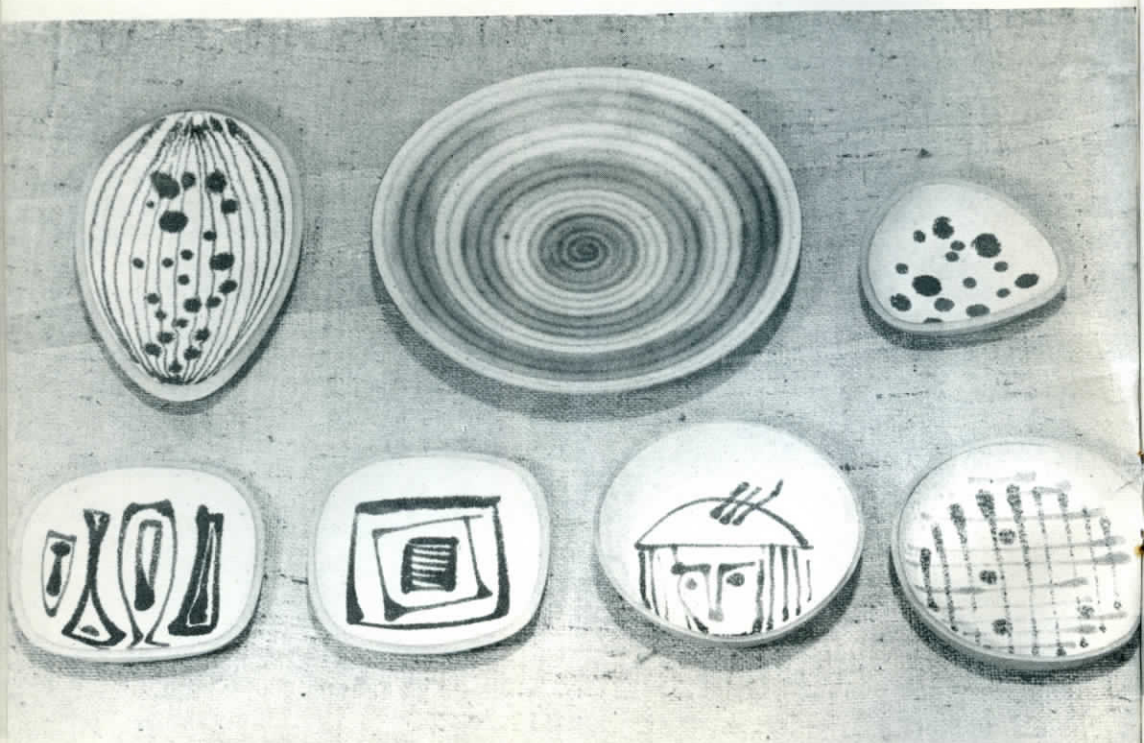


Top row - Large hand pressed tray with dark grey majolica decoration, P78-2, 11" long 10" wide, 8.00 - Large hand pressed tray with brown and green majolica decoration, P78-1, 11" long 10" wide, 8.00 - Middle row - Rectangular plate with brown and green majolica decoration, P79-3, 7 $\frac{1}{2}$ " x 9", 5.00 - Rectangular plate available in any of our plain matte glazes, P79-30, 7 $\frac{1}{2}$ " x 9", 4.00 - Rectangular plate with dark grey majolica decoration, P79-2, 7 $\frac{1}{2}$ " x 9", 5.00 - Bottom row - Rectangular plate with dark grey majolica decoration, P79-4, 7 $\frac{1}{2}$ " x 9", 5.00 - Rectangular plate with dark brown majolica decoration, P79-1, 7 $\frac{1}{2}$ " x 9", 5.00 - Rectangular plate with blue and brown majolica decoration, P79-5, 7 $\frac{1}{2}$ " x 9", 5.00

ALL PRICES SHOWN ARE AT RETAIL



Ash tray, P46-32, 8½" long, 4.00 - Small bottle, M80-28, 4" high, 1.10 Hand thrown bowl, T44-42, 5" dia., 5.00 - Cigaret box with leather lid, M49-31-28-1, 4" high, 4.00 - Pressed ash tray with slip trailed decoration, P59-5, 8" long, 3.00 - Pressed ash tray with slip trailed decoration, P59-1, 8" long, 3.00



Top row - Pressed ash tray with majolica decoration, P89-1, 10" long, 3.50 - Plate with green majolica decoration, M7-3, 10½" dia., 6.00 - pressed tray with majolica dots, P90-1, 4½" dia. 2.00 - Bottom row - Pressed tray with majolica decoration, P58-5, 6" square, 3.00 - Pressed tray with majolica decoration, P58-5, 6" square, 3.00 - Molded bowl with majolica decoration, M88-2, 6" dia., 3.00 - Molded bowl with majolica decoration, M87-1, 6" dia., 3.00



Lamp M84-35
Height 29"
grey textured matte glaze
Retail price - \$20.00

Shade No. F12D
14" cylinder, 10½" side
natural cane
Retail price - \$10.90

Complete - \$30.90



Lamp M53-31
Height 27"
deep olive green
matte glaze
Retail price - \$25.00

Shade No. GCOT-656-15D
17" - 10" - 18" drum
green and tan Japanese
grasscloth
Retail price - \$17.20

Complete - \$42.20



Lamp M82-46-1
Height 24½"
black glaze with incised
decoration
Retail price - \$30.00

Shade No. F4D
16" neo drum
natural linen
Retail price - \$14.60
(No. F11B booklinen, tan
\$9.30 retail)

Complete - \$44.60



Lamp M84-41
Height 29"
greyed blue green matte
glaze
Retail price - \$20.00

Shade No. FE6D
16" decor drum
barkcloth
Retail price \$14.60

Complete - \$34.60



Lamp M81-32-1
Height 29"
light brown matte glaze
Retail price - \$35.00

Shade No. F11B
19" neo drum
gold booklinen
Retail price - \$13.00

Complete - \$48.00



Lamp M85-35
Height 32"
grey matte textured
glaze
Retail price - \$30.00

Shade No. GCOT-656-15D
17" - 12" - 18" drum
green and tan Japanese
grasscloth
Retail price - \$17.20

Complete - \$47.20





Lamp M81-48
Height 31"
matte off white glaze
with tan flecks
Retail price - \$30.00

Shade No. 205B
18" deep decor drum
white burlap
Retail price - \$11.00

Complete - \$41.00

Lamp M83-12-49
Height 16½"
white with majolica brown
glaze trailing
Retail price - \$15.00

Shade No. 205B
16" cone
warm brown burlap
Retail price - \$9.30

Complete - \$24.30



Lamp M56-41-1
Height 19½"
greyed blue green matte
glaze with smoke trailed
decoration
Retail price - \$15.00

Shade No. 5110C
13" new drum
grey background, olive
green applique
Retail price - \$9.80

Complete - \$24.80





Lamp M50-46
Height 28"
black glaze
Retail price - \$30.00

Shade No. F8D
17" - 10" - 18" drum
pandanus cloth
Retail price - \$17.20

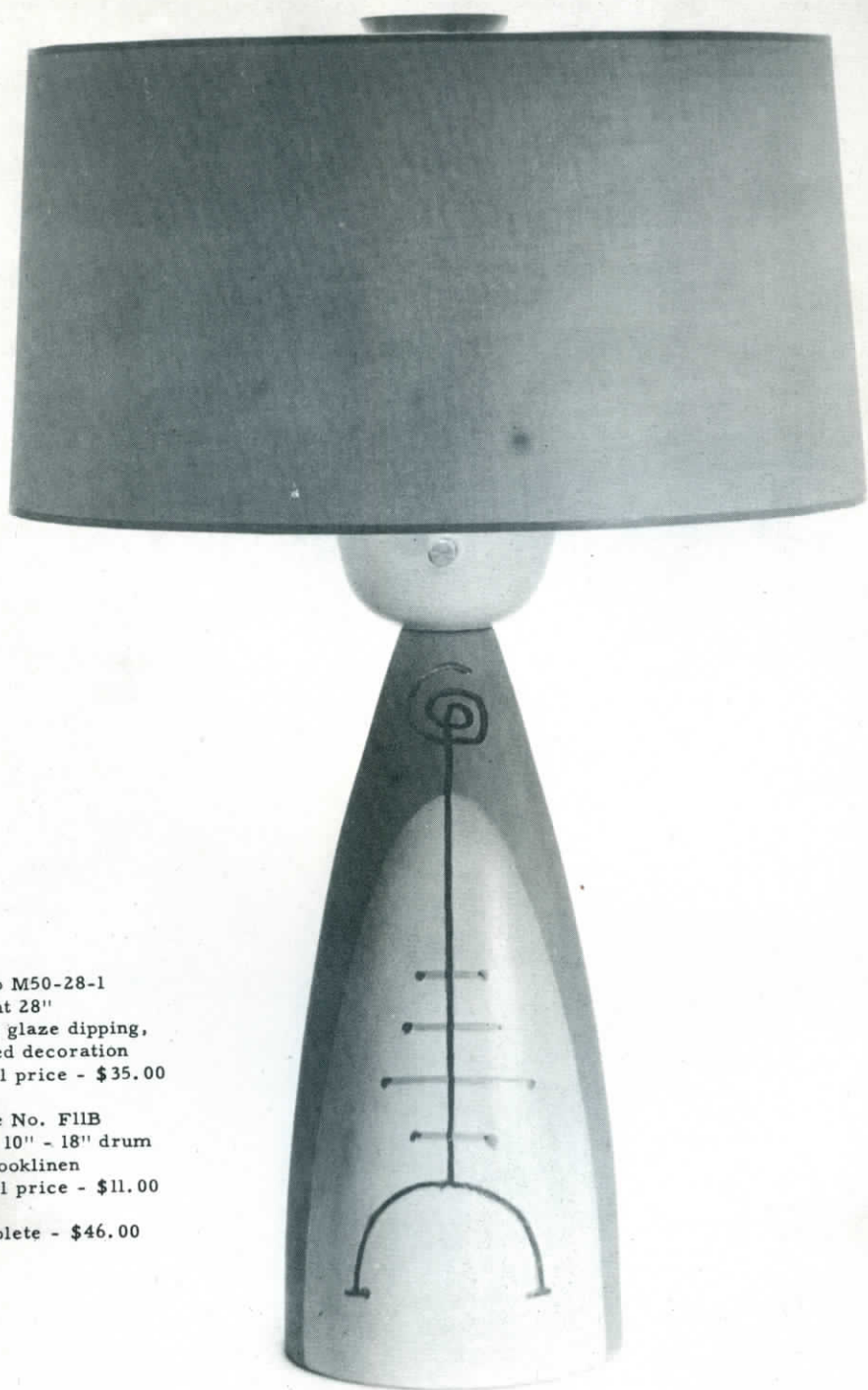
Complete \$47.20

Lamp M56-31-2
Height 19½"
deep olive green
matte glaze
Retail price - \$15.00

Shade No. 205B
13" new drum
white burlap
Retail price - \$7.80

Complete - \$22.80

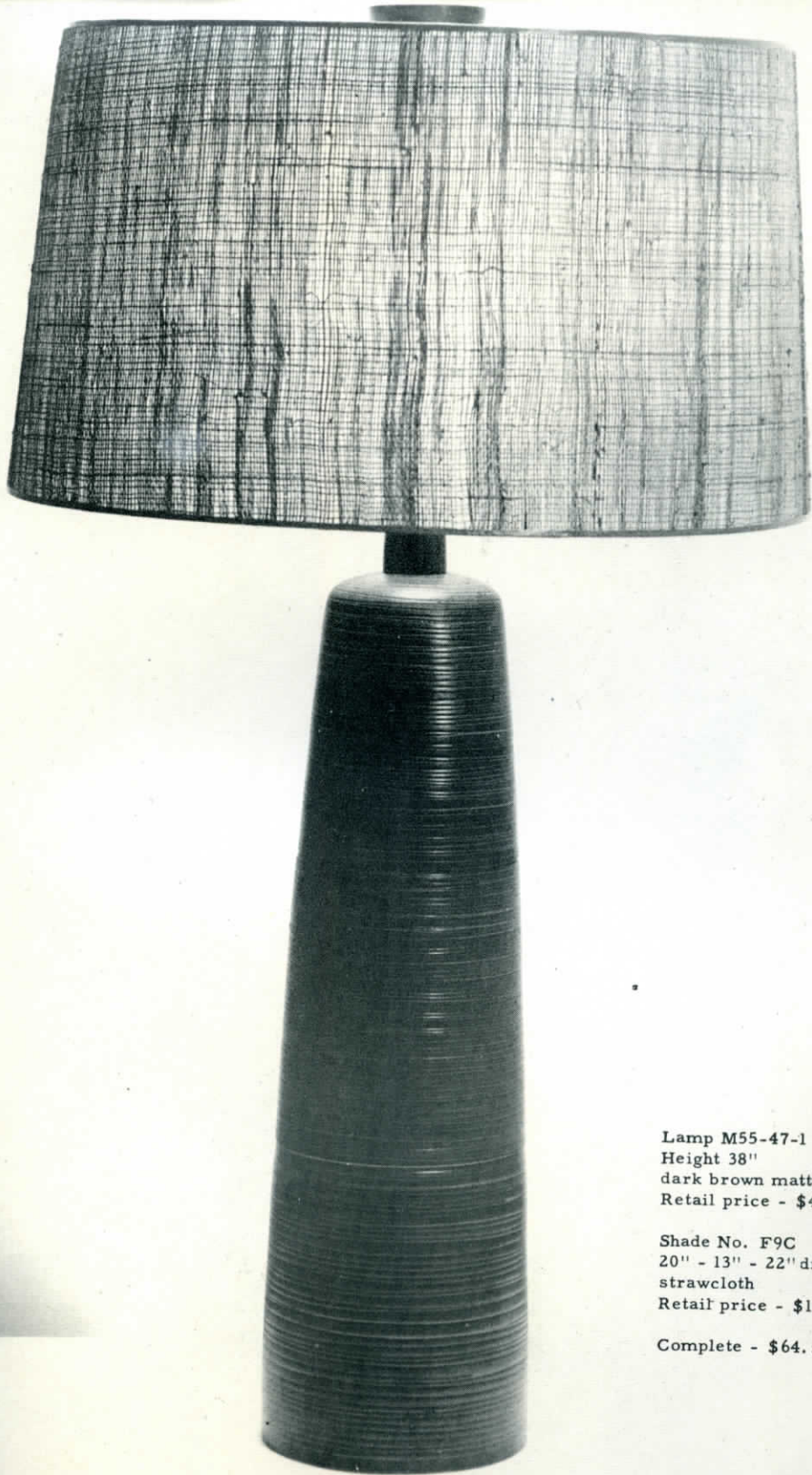




Lamp M50-28-1
Height 28"
white glaze dipping,
trailed decoration
Retail price - \$35.00

Shade No. F11B
17" - 10" - 18" drum
tan booklinen
Retail price - \$11.00

Complete - \$46.00



Lamp M55-47-1
Height 38"
dark brown matte glaze
Retail price - \$45.00

Shade No. F9C
20" - 13" - 22" drum
strawcloth
Retail price - \$19.50

Complete - \$64.50

Lamp M51-28-2
Height 21½"
white matte glaze with
black bands
Retail price - \$30.00

Shade No. F11B
16" extra deep drum
white booklinen
Retail price - \$9.30

Complete - 39.30



Lamp M51-39-1
Height 21½"
brown glaze, incised
decoration
Retail price - \$30.00

Shade No. 211D
16" extra deep drum
grey matchstick
Retail price - \$14.60

Complete - \$44.60





Lamp M41-33
Height 25½"
light green textured
glaze
Retail price - \$17.50

Shade No. F13C
16" deep new drum
chartreuse texture
Retail price - \$11.60

Complete - \$29.10



Lamp M41-37-1
Height 27½"
matte black back-
ground with glaze
trailed decoration
Retail price - \$25.00

Shade No. 205B
17" new drum
natural burlap
Retail price - \$11.00

Complete - \$36.00

Lamp M41-28-8
Height 25½"
white matte glaze,
incised decoration
Retail price - \$20.00

Shade No. F11B
16" deep new drum
tan booklinen
Retail price - \$9.30

Complete - \$29.30





Lamp M41-32-7
Height 25½"
light brown matte glaze,
incised decoration
Retail price - \$20.00

Shade No. 205B
16" deep new drum
gold burlap
Retail price - \$9.30

Complete - \$29.30

Lamp M20-41-2
Height 27½"
Greyed blue green matte glaze
with smoke accents
Retail price - \$40.00

Shade No. FE6D
18" drum oval
Barkcloth
Retail price - \$22.00

Complete - \$62.00



GLAZE INFORMATION

Any of the pieces photographed may be had in a variety of glazes: blues, tans, browns, greens, and earth colors. All ware is fired to stoneware temperature, forming a hard and durable clay. The glazes are selected with an attempt to fit the surface quality of the piece to the feeling of the form.

In numbering the accessories, the first number is the form, the second the glaze, and the third the decoration. The glaze numbers and their corresponding colors are listed below, and may be applied to any piece in this folder if a change is desired.

28	matte white glaze
30	matte dark brown glaze
31	matte smoke glaze
32	matte light brown glaze
33	matte light textured green glaze
35	matte textured grey glaze
45	matte black glaze

Finials, necks and bases of wood are hand turned of maple and walnut, and have a waxed finish.

Fittings: All of our lamps are fitted with three-way sockets and Bolite harps.

ALL PRICES SHOWN ARE AT RETAIL

Important Notice: We regret that it has been necessary to temporarily discontinue wood lamp bases. Our line now consists of the lamps as shown in this catalog.

Lampshade Information: All of our lampshades are custom made, and the various textures shown in the lamp photographs are interchangeable, with the exception of our new cane material, which can be made in cylinders only. We have a complete special order lampshade service, and full information is available upon request.

MARSHALL STUDIOS, INC.
VEEDERSBURG, INDIANA

Sec. 34.66 P. L. & R.