

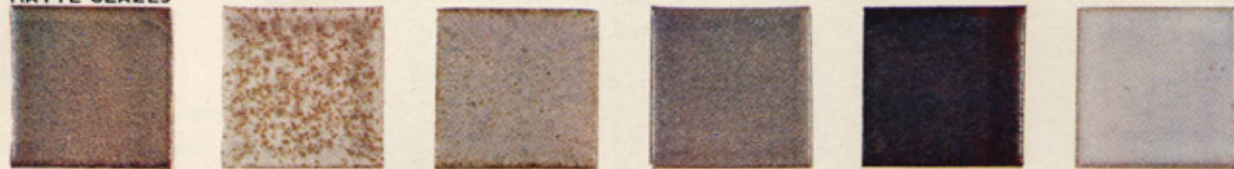
GLAZE COLOR AND DECORATION CHART - 22

For **STONEWARE Lamps, Accessories and Tile Tables** - made by
MARSHALL STUDIOS, Inc. Veedersburg, Indiana Telephone 317-294-2211

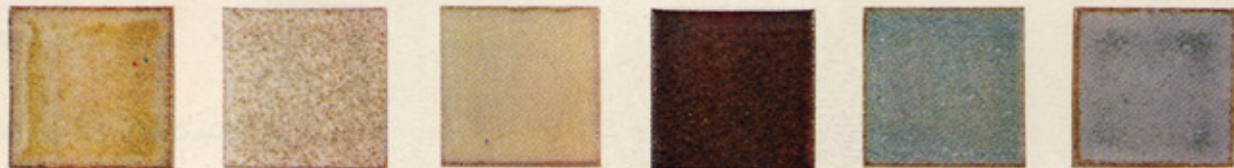
This chart consolidates the glazes and decorative techniques available for use on lamps, accessories and tile. Because our stoneware is fired in periodic kilns, there will be some variation in color from one firing to another. Also the actual ware may vary slightly from the colors on this chart due to variations in color printing.

MATTE GLAZES

OUR STONEWARE GLAZE CHART NUMBER 18 IS AVAILABLE FOR \$2.00.



30 35 11 29 45 28



32 33 67 31 15 22



18 25 26 24 16 27

SHINY GLAZES

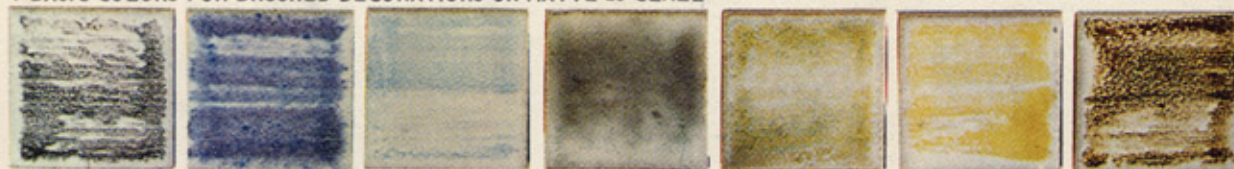


50 51 74 73 65 23



62 75 60 56 29 70

7 BASIC COLORS FOR BRUSHED DECORATIONS ON MATTE 28 GLAZE



28D27 black 28D27 purple 28D27 blue 28D27 med. green 28D27 green 28D27 yellow 28D27 brown

7 BASIC COLORS FOR BRUSHED DECORATIONS ON SHINY 23 GLAZE



23D27 black 23D27 dark blue 23D27 light blue 23D27 med. green 23D27 green 23D27 yellow 23D27 brown

STONEWARE DECORATIONS

INCISING is always tan as on
 D59
 D60
 D63
 D116
 D118
 may be cut into any
 background glaze

COLORED BRUSHINGS as on
 D41
 D46
 D47
 D58
 may be:
 BROWN
 YELLOW
 GREEN
 BLUE
 PURPLE
 BLACK
 may be put on any
 background glaze

MAJOLICA DOTS or TRAILING
 as on
 D39
 D62
 D63
 may be put on any
 background glaze



accessories

tile

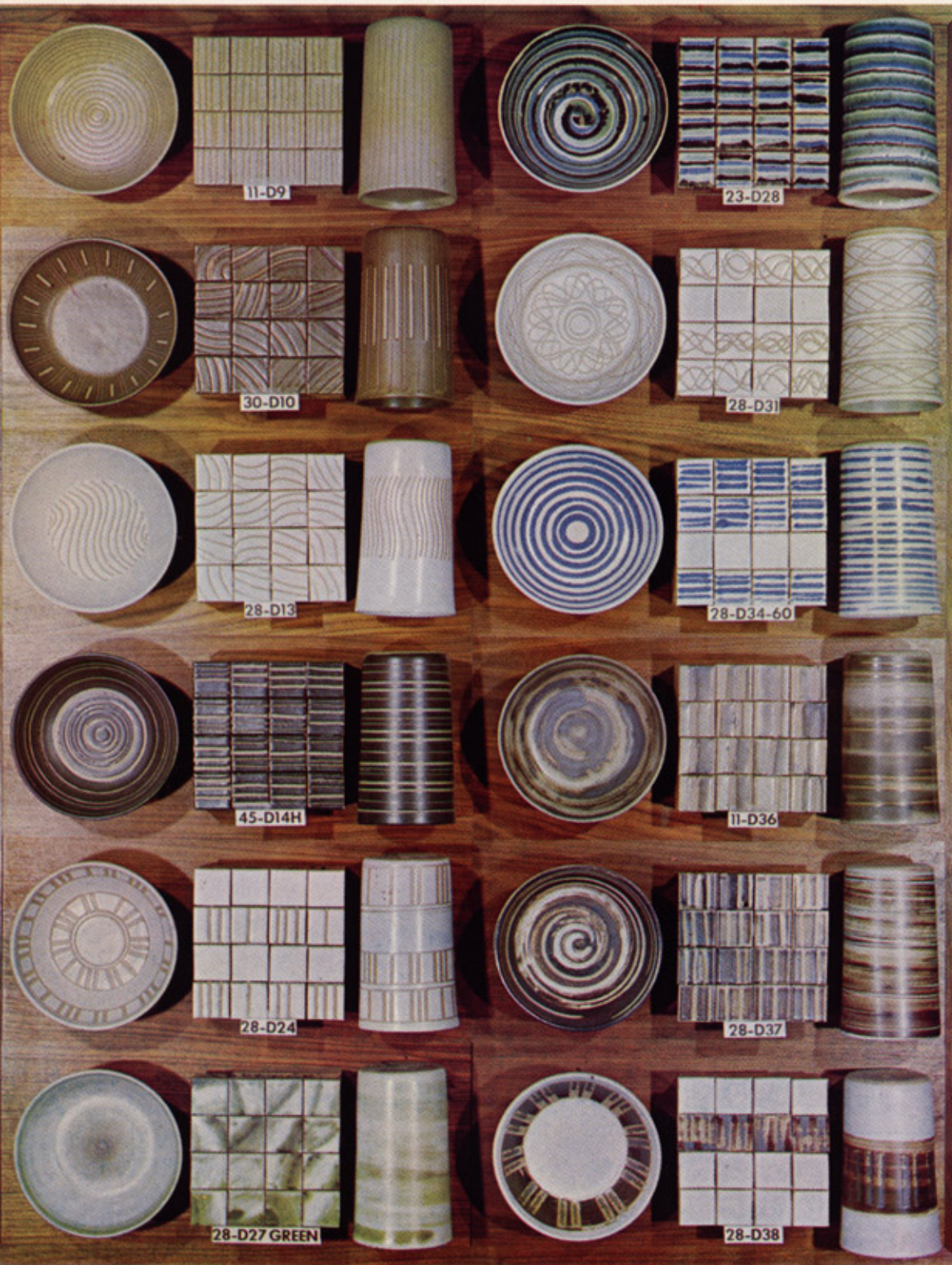
lamps

accessories

tile

lamps

STONEWARE DECORATIONS



INCISING is always tan as on
 D9
 D10
 D13
 D14H
 D24
 D31
 D36
 D38
 may be cut into any
 background glaze

COLORED BRUSHINGS as on
 D27
 D36
 D37
 D38
 may be:
 BROWN
 YELLOW
 GREEN
 BLUE
 PURPLE
 BLACK
 may be put on any
 background glaze

MAJOLICA TRAILING as on
 D28
 D34
 D37
 may be put on any
 background glaze

accessories

tile

lamps

accessories

tile

lamps

Decorations D31 and D37 are limited to round lamps only. They cannot be used on all accessories, only on bowls.

10% CHARGED FOR VARIATIONS FROM THE ABOVE COMBINATIONS

STONEWARE DECORATIONS



INCISING is always tan as on
D119
125
D127
D128
 may be cut into any
 background glaze

COLORED BRUSHINGS as on
125
D124
D132
 may be:
BROWN
YELLOW
GREEN
BLUE
PURPLE
BLACK

background glaze may be:
51 (white clay)
23 gloss white
28 matte white

MAJOLICA DOTS as on
D127
D128
 may be put on any
 background glaze

accessories

tile

lamps

All illustrated lamp decorations except
 D128 and D132 are limited to round
 lamps.

accessories

tile

lamps

Decoration 125 cannot be used on all
 accessories, only bowls as illustrated.

10% CHARGED FOR VARIATIONS FROM THE ABOVE COMBINATIONS