

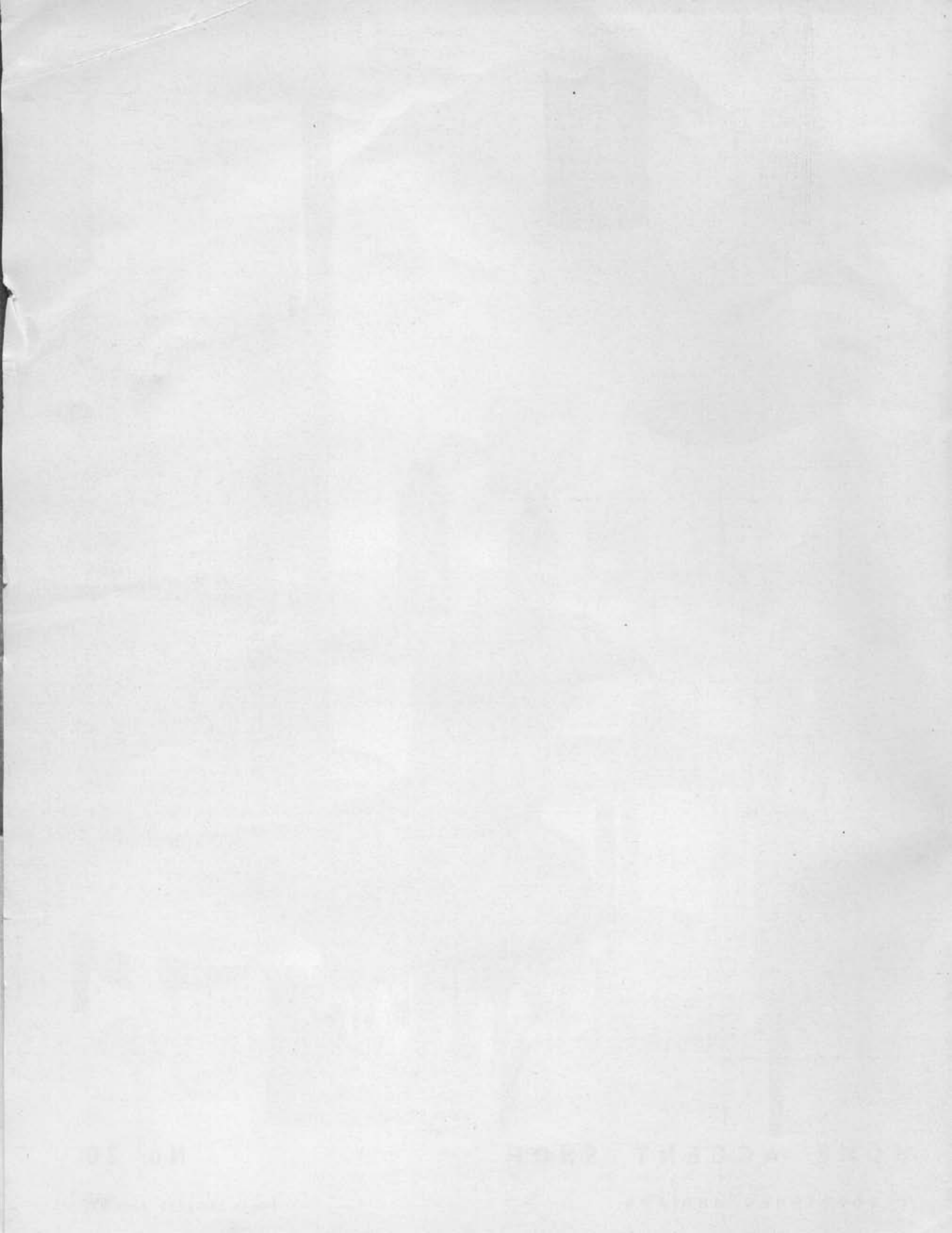


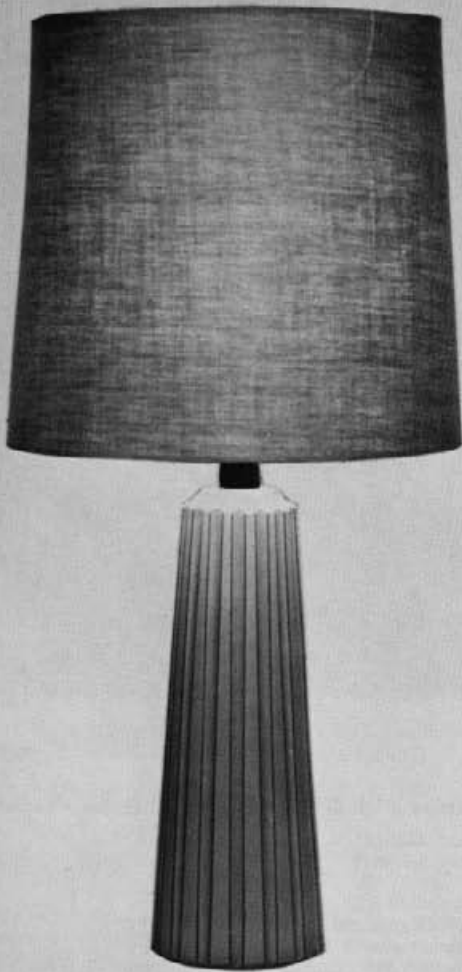
HOME ACCENT SHOP

No. 20

VEEDERSBURG, INDIANA

Phone 294-2223, Area 317





Lamp 254-28-edged
height 39½"
matte white,
tan vertical edges

Shade GRVW/B
17-18-19 drum
white linen
\$15.50 retail



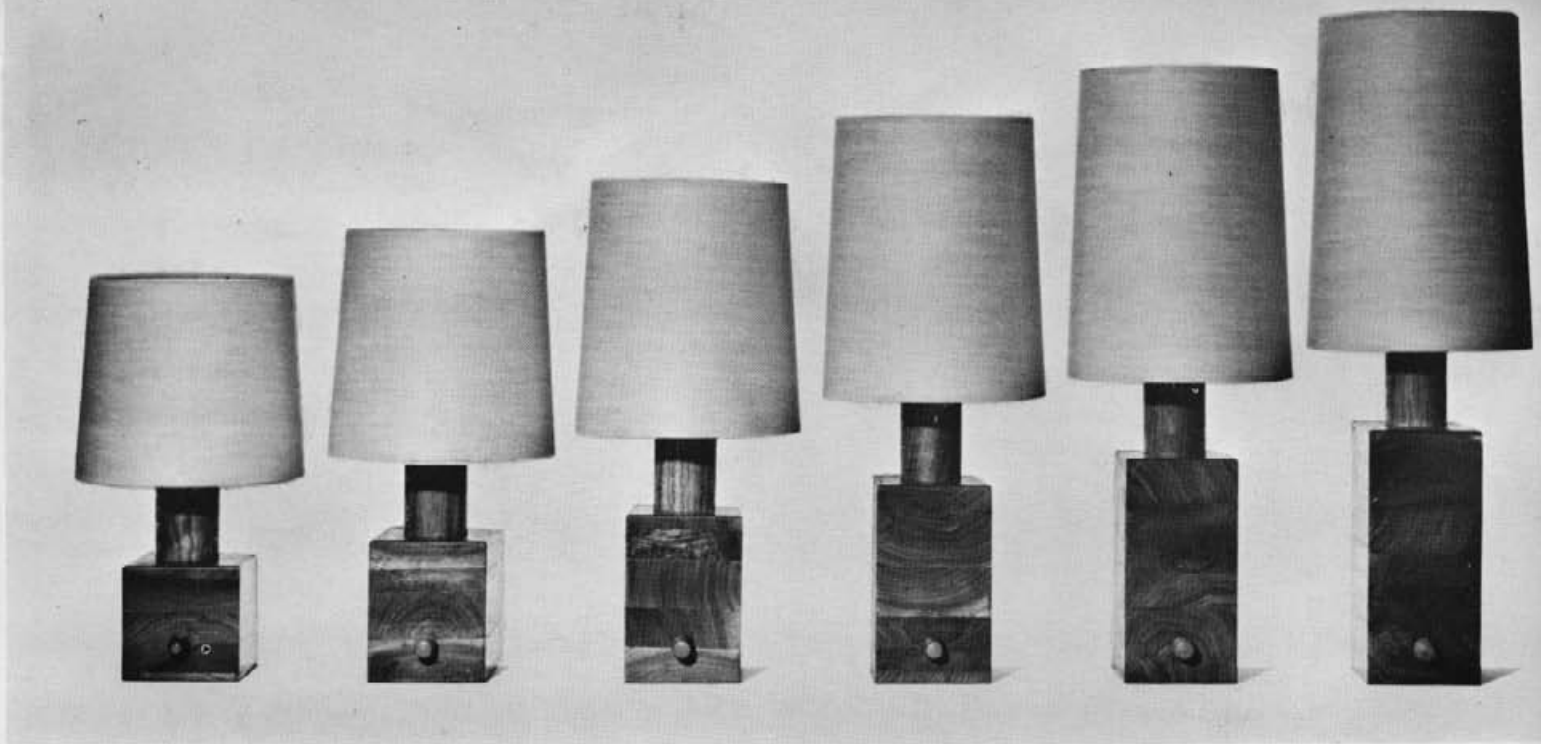
Lamp 256-45-edged
height 28"
matte black,
tan vertical edges

Shade GRF/B
12-13-14 drum
flax
\$9.50 retail



Lamp 255-35-D27-black
height 41"
matte textured tan and grey
over-all black brushing

Shade GRVN/B
17-18-19 drum
natural linen
\$15.50 retail



SW34 stacked walnut lamps with GRVN/B natural linen shades

height	shade size
SW34-14"	7-7-8
SW34-16"	7-8-8
SW34-18"	7-9-8
SW34-20"	7-10-8
SW34-22"	7-11-8
SW34-24"	7-12-8

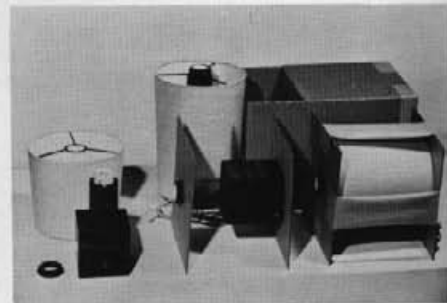
*Special unit price is with GRVN, natural linen, or GRVW, white linen. Please specify fabric.

The SW34 stacked walnut lamps are made and stocked at a special price with GRVN, natural linen or GRVW, white linen, shades only and are not subject to additional quantity discounts.

On these lamps, a threaded porcelain socket is enclosed in a walnut husk, which lowers the bulb to the best position.

A threaded counter-ring secures the lampshade to the base. A convenient walnut one-way turn knob switch in the base is standard.

Marked prepacked units are furnished when multiples of 8 (4 pair) are ordered. Smaller quantities will be packed in our regular manner.

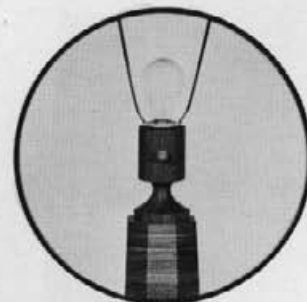


Prepacking of SW34 walnut lamps when ordered in multiples of 8.

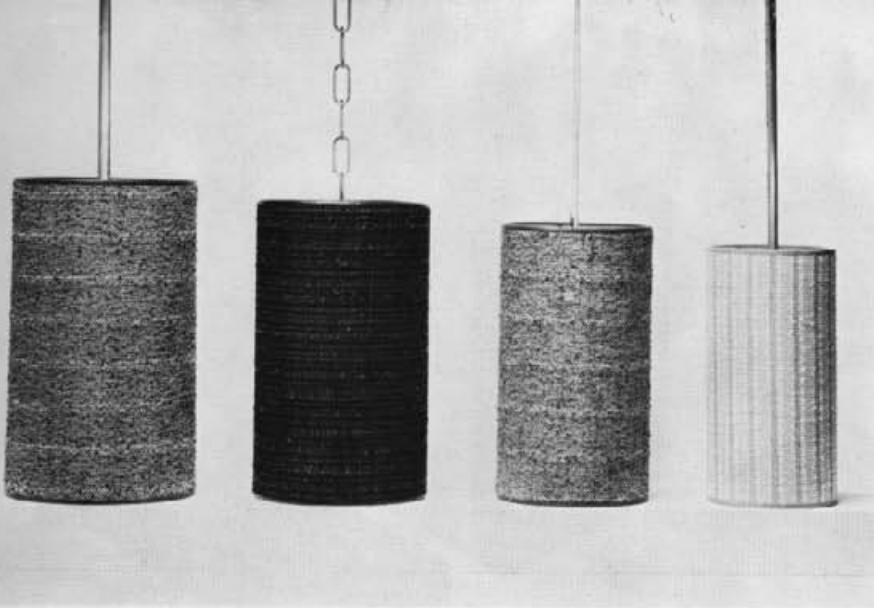


Lamp SW35-34"
 Stacked walnut
 34" high
 Recessed socket
 enclosed in walnut husk

Shade 635/B
 14-15-15 drum
 buff shantung, self fold binding
 \$14.00 retail

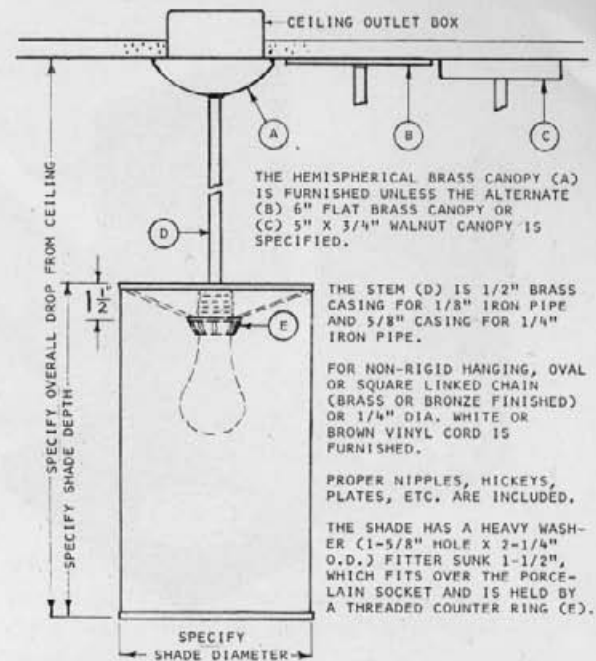


Socket enclosed in walnut husk



HANDWOVEN HANGING LIGHTS

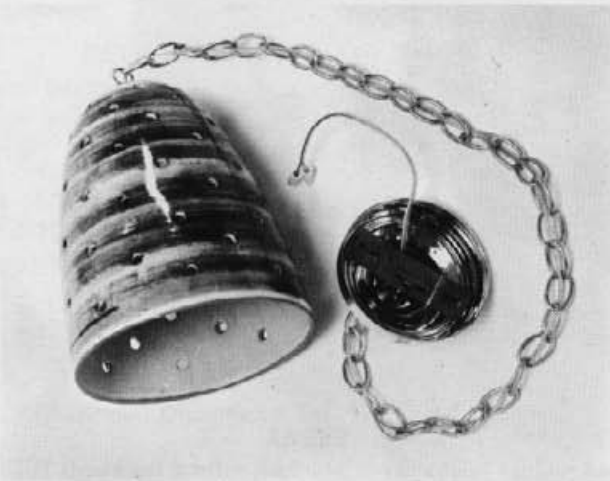
HW6531/D - brown ratine 9-15-9" cylinder	HW6533/D - blue black ratine 8-14-8" cylinder	HW6532/D - blue ratine 7-13-7" cylinder	HW6534/D - biscuit stripe 6-12-6" cylinder
---	--	--	---



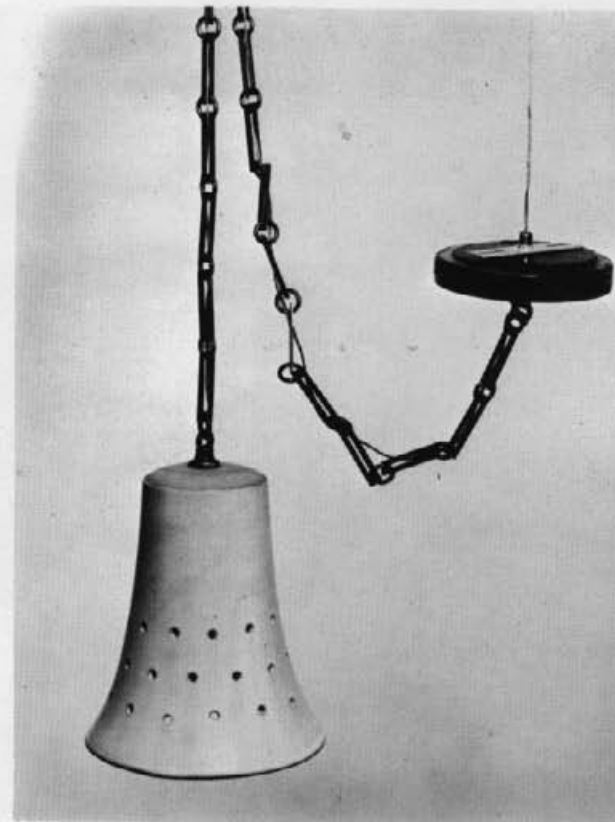
- PLEASE SPECIFY THE FOLLOWING FOR HANGING LAMP SHADE FIXTURES.
1. SELECT SHADE COVERING FROM STANDARD OR HANDWOVEN SWATCHES.
 2. GIVE SHADE DIMENSIONS. OTHER FORMS THAN CYLINDERS MAY BE SPECIFIED.
 3. SELECT APPROPRIATE HANGING METHOD FOR THE INSTALLATION.



236-D37
Hanging lamp
8½" dia., 10½" high
15' bronze chain for swag ceiling installation, includes in-line switch and two hook kits
Standard keyless socket
Matte brown and white



236-23-D47
Hanging lamp
8½" dia., 10½" high
4' brass chain for drop ceiling installation
Gloss white and brown
Brass canopy



258-28
Hanging lamp
6¾" dia., 8½" high
4' bronze chain for drop ceiling installation
Matte white
Walnut canopy

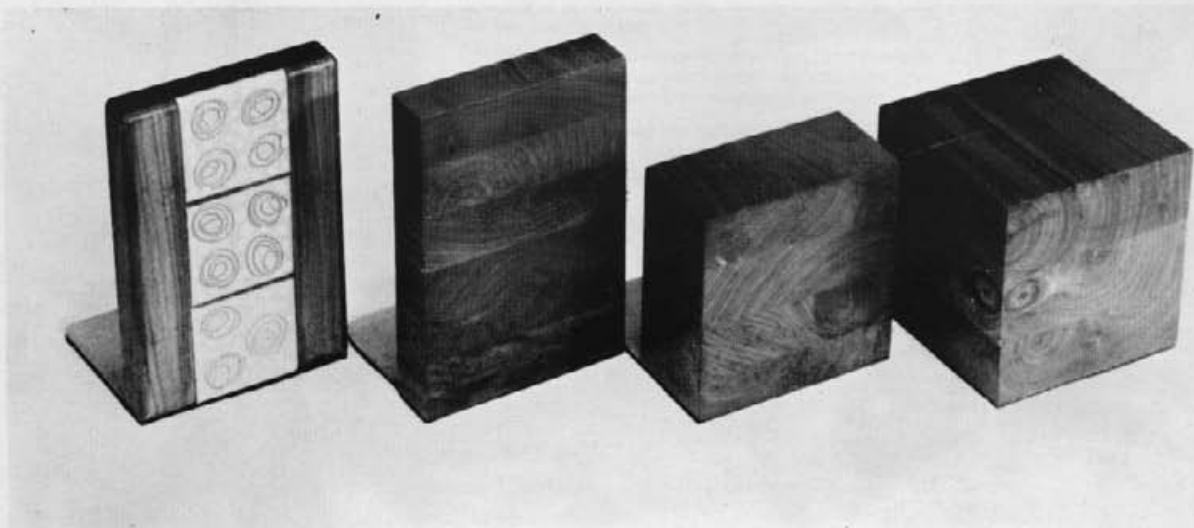


WBES9-45
walnut bookends
matte black tile
7½" x 5"

*Matching Parker pen sets available at franchised
Parker pen dealers*



WBES8-28
walnut bookends
matte white tile
7½" x 5"

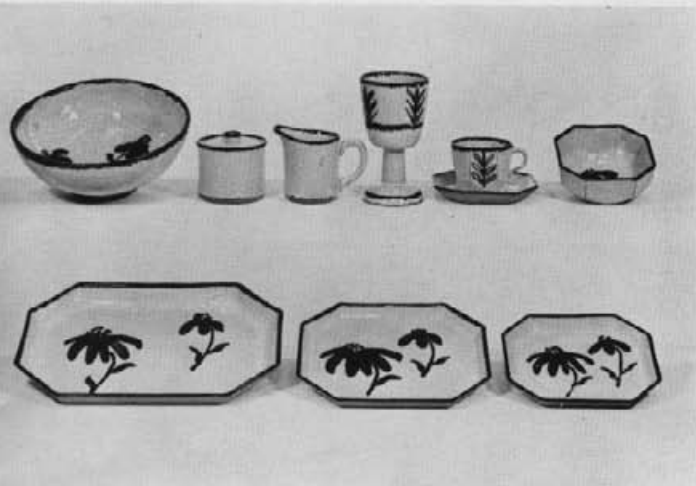


WBER10-16-128
walnut bookends
matte light blue tile,
white dots and tan incising
7½" X 5"

SWBE1
stacked walnut bookends
1¼" x 5" x 7½"

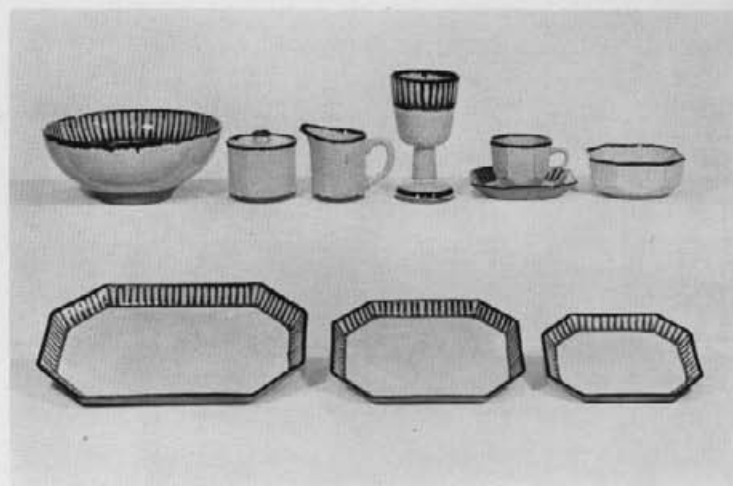
SWBE2
stacked walnut bookends
2½" x 5" x 5"

SWBE3
stacked walnut bookends
5" x 5" x 5"



DECORATION NO. 169

gloss white background, dark blue and black flowers



DECORATION NO. D28-60

gloss white background, dark blue decoration (also available in gloss white background with dark brown decoration) Please specify color.



DECORATION NO. D59

matte white background, tan incising (also available in any of our background glaze colors) Please specify color.

- J4-J6-28-D59 cup & saucer 6 ounces
- M76-71-28-D59 sugar & creamer 4 inches
- M309-28-D59 coffee server 2 quarts



DECORATION NO. 167

gloss tan background, black and brown decoration (also available in gloss white background with brown and black decoration or blue and black decoration) Please specify color.

Octagonal Dinnerware Set

- M257 salad bowl 10" dia.
- M306 goblet 7" high
- OC308 oct. platter 15"
- OC4 cup 4" dia.
- OC55 soup bowl 5½" dia.
- OC6 saucer 6" dia.
- OC85 salad plate 8½"
- OC105 dinner plate 10½"
- M76 sugar bowl 4" high
- M71 creamer 4" high



DECORATION NO. D67

gloss white background, light blue and medium blue textured decoration



TORL3-35 Walnut Teacart
 20 $\frac{1}{4}$ " X 31 $\frac{1}{4}$ "
 28" high - sculptured legs
 with hooded brushed brass casters
 Corners rounded
 1 $\frac{1}{4}$ " square tile in glaze 35,
 matte textured tan and grey



TOLR-6155 Oiled Walnut
 16 $\frac{1}{4}$ " square
 20" high - square base, four columns
 2 $\frac{1}{2}$ " tile in 28-D46, matte white with blue and
 brown, 1 $\frac{1}{4}$ " tile bands in glaze 19, medium blue



TS3 Oiled Walnut Desk
 29 $\frac{3}{4}$ " X 53 $\frac{1}{2}$ " with drawer
 28" high - square flush corner legs
 Stripped walnut shelf
 Top in 1 $\frac{1}{4}$ " matte black tile
 with walnut inlay
 Drawer 2 $\frac{1}{2}$ " deep



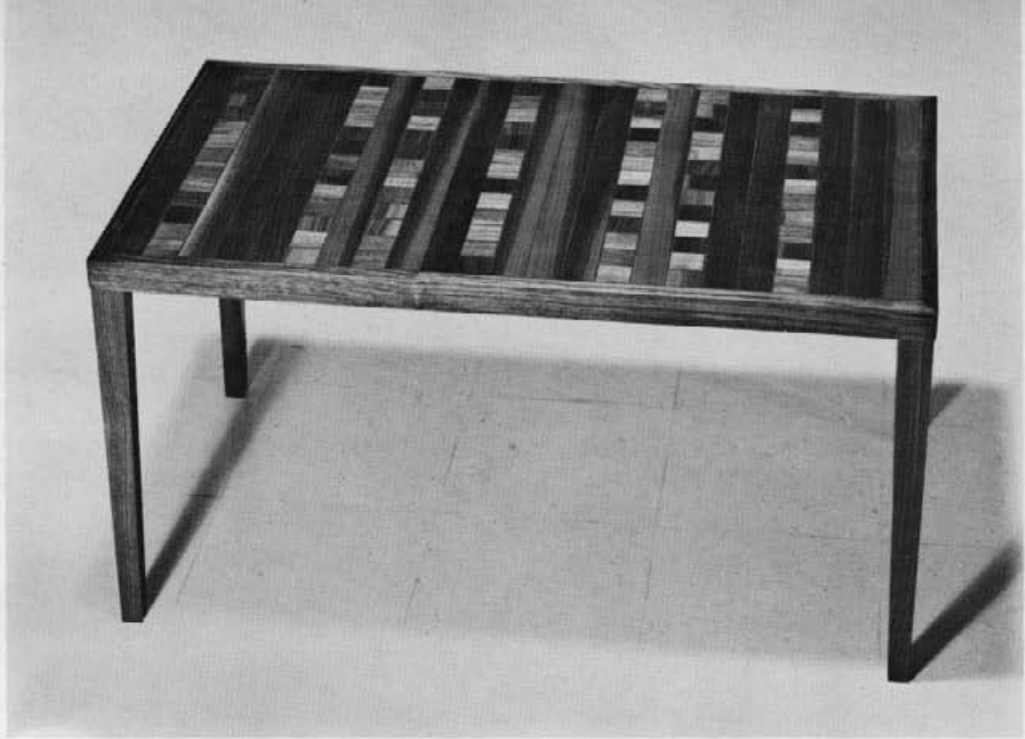
TOI - Oiled Walnut
26 $\frac{1}{4}$ " X 31 $\frac{1}{4}$ "
16" high - sculptured frame
1 $\frac{1}{4}$ " square walnut tile



TSI-28-D66/B Walnut
30" square
20" high - square flush corner legs
2 $\frac{1}{2}$ " decorated tile in glaze 28 matte white



TOI Oiled Walnut
18 $\frac{3}{4}$ " square
16" high - square flush corner legs, tapered
inside
1 $\frac{1}{4}$ " square walnut tile



TO1-6575/B Oiled Walnut
 17½" X 30"
 16" high - square flush corner legs, tapered
 inside
 Square ¼" walnut tile and ¼" walnut strips



TS2-6560/C Walnut
 20½" X 30½"
 16" high - square flush corner legs
 design in 45 matte black and 16-D36 matte blue

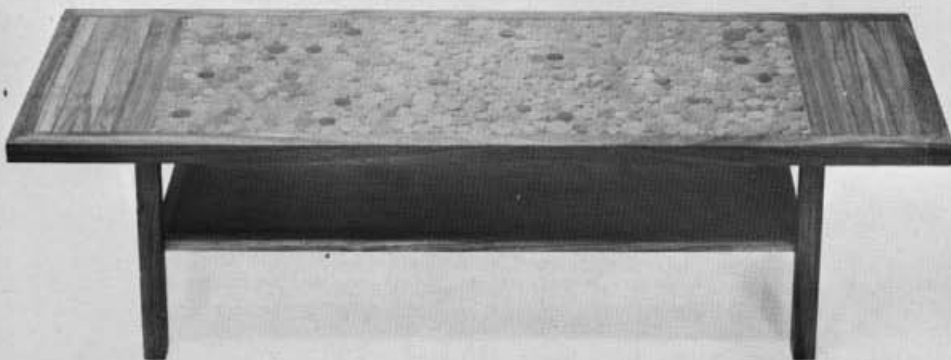


TS1-32-D37-black Natural Oak
 18¾" square
 16" high - square flush corner legs
 Gold, brown and black brushed and trailed
 decoration



TOLR2-11-D36 Oiled Walnut
20" X 30"
20" high - square legs, rounded
1/4" tile in random brushed green,
tan scraping

TSPR-45 Oiled Walnut
38" diameter - rounded square molding
28" high - funneled dowel legs
1/4" tile, glaze 45 matte black



TS2-6520/E Walnut Table
19 1/4" X 60 1/2"
16" high - square flush corner legs set in 9"
Walnut shelf
design in 30R matte brown with walnut strips



TOR-32R/D Walnut Pedestal
 11¼" diameter
 18" high
 Matte gold assorted round tile

TOR-30R/D Walnut Pedestal
 16¼" diameter
 20" high
 matte dark brown assorted round tile

TOR-35R/D Walnut Pedestal
 13¾" diameter
 19" high
 matte textured tan and grey assorted round tile



TOI-28 Round Oiled Walnut
 28¾" diameter
 22" high - sculptured pedestal
 1¼" tile in glaze 28, matte white



TOR-6166 Oiled Walnut
 18¾" diameter - Tile 28-D47
 20" high - six column sculptured pedestal
 Green, brown and black brushed decoration



TORL-6166 Oiled Walnut (lipped)
 28¾" diameter - Tile 32-D27-black
 22" high - six column sculptured pedestal
 Gold and brown brushed decoration



T03-6200/E Oiled Walnut
 48 $\frac{3}{4}$ " diameter
 28" high - sculptured ring pedestal
 Assorted round tile in glaze 45, matte black, with seven circles in small square tile in glaze 45

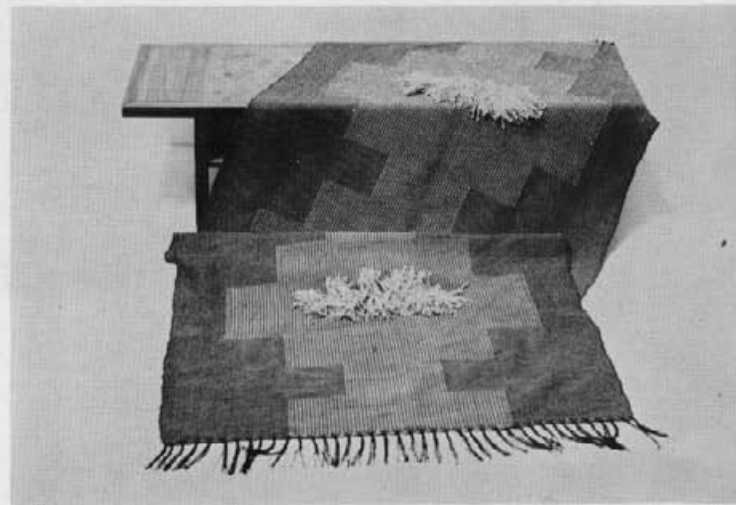


TSAI-30 Round Teak Table
 36 $\frac{1}{4}$ " diameter
 16" high - round tapered legs
 1 $\frac{1}{4}$ " square tile in glaze 30, matte brown



TSI-35 Round Walnut Table
 45" diameter
 25" high - square legs set flush at edge of table
 1 $\frac{1}{4}$ " square tile in glaze 35, textured tan

Special wall hangings, draperies, or church dossals woven upon request.



Handwoven rugs or wall hangings

80% wool, 20% rayon

3' X 6'

Available in tones of brown, green, gold, or blue.
Please specify color.



Handwoven stoles

26" X 72"

50% rayon, 50% linen

Available in assorted designs only, similar to those shown. Please specify color wanted.
Choice of red, green, blue or brown.



Dossal woven in blue and earthtones, linen and wool fibre



Dossal woven in tones of red, linen and wool fibre

