



spring 1954

accessories and lamps

catalog no. 5

designed by jane and gordon MARTZ

# Ceramics

marshall studios, inc.

The following information is given to clarify the production of our stoneware lamps and accessories by Jane and Gordon Martz:

Clay and glaze materials are purchased from various parts of the country and weighed out to formulate our own body and glazes.

The original forms are made in plaster or clay and used as models for plaster molds. Clay is cast or pressed into plaster molds - wheel thrown pots are made on special order, sold locally, sent to shows or tried for new three dimensional ideas for future forms.

Decorations are accomplished by wax resist, sgraffito, underglaze, majolica and slip trailing.

Glazes are applied by brushing, dipping and spraying. The glazes are selected with an attempt to fit the surface quality of the piece to the feeling of the form.

Most of the ware is twice fired; final glaze firing is to stoneware temperature cone 9 or 2350 degrees F., forming a hard and durable clay. Firing is achieved in periodic, down-draft kilns using liquid propane gas.

Ware is ground or felted and the lamps are furnished with walnut fittings, hand-turned and finished at the studio. Ceramic and wood husks are employed on some bases, incorporated into the design and used for obtaining a more efficient spread of light.

An interesting feature of our lamps is the artist's signature, which appears at the back, above the cord.

All of our lamps now carry the approval of the Underwriters' Laboratories, Inc., as an added safety feature.

Three-way sockets and Bolite harps are employed whenever possible; however, it is necessary to use one-way sockets on several of the smaller units - you will find this information in the description of each lamp.

Shades are custom made, and the various textures and materials shown in the lamp photographs are interchangeable. We maintain a complete special order service on lampshades, and full information is available upon request. Shades are integrated with glazes and the ceramic bases to form a lamp without limitations - composed to supply quality, reasonable price, and a carefully designed unit.

**DECORATED** ware is worked out successfully as shown in the catalog, and due to technical reasons, deviations from our combinations cannot be made.

**IMPORTANT!** THIS CATALOG (NO. 5) SUPERSEDES ALL OTHERS. Our line now consists only of the ware and glazes as shown.

It is necessary to ADD 10% if forms or glazes not included in this catalog are desired.

**SERVICE CHARGE.** Our minimum order is \$10.00 - there is a service charge of \$1.00 on all orders under this minimum. We suggest that you group your small orders whenever possible to avoid this additional cost.

*55 to 100 small*

**SHIPPING INFORMATION.** Since the greatly increased Parcel Post rates are in effect, the ratio between Express and Parcel Post rates has changed greatly. Our Shipping Department gives careful consideration to the expense involved in each shipment, and in making a decision between Parcel Post and Express shipments, the weight and distance involved are given careful thought. On large shipments we use the best and least expensive carrier - either Truck or Freight, depending upon the distance and weight. We shall be pleased to follow any specific instructions you may wish to give us on shipping to your particular location.

**DAMAGE IN SHIPMENT.** All of our stoneware is carefully packed and when your order leaves our studio it is in perfect condition. If breakage occurs, it is necessary for you to file your claim with the carrier to cover the loss. We shall be glad to send replacement pieces upon receipt of your request.



Jane Marshall Martz and Gordon Martz, the designers of our ceramic lamps and accessories, attended Alfred University, the New York State College of Ceramics, Alfred, New York.

They have been making ceramic lamps and accessories at the studio since June, 1951, and they have received many awards for their outstanding work since that time. The response to their work has been most gratifying, and it is again necessary to increase their facilities because of the continually growing demand for their stoneware lamps and accessories.

A catalog is issued every six months to assure our customers of full and up to date information on our ceramics, and complete samples are shown at the Palmer House Lamp Show in Chicago, and at the LaSalle Hotel with the Eastern Exhibitors in Chicago.



M116-28  
Candlestick  
White, 7" high  
\$2.50



M117-35-1-P  
Candleholders with  
planter in textured  
gray glaze, supported  
by wire stand with  
wood feet 11" high  
**\$8.50**

Without planter  
M117-35-1  
\$5.00



M116-28  
Candlestick  
White, 7" high  
\$2.50



M110-30-45 mug  
Brown and black  
4" high  
\$2.20

Decanter set as shown  
\$21.00 complete

plate with wire rack  
M115-35-1  
wire rack with leather  
wrapped handles  
\$10.00

bottle  
M91-28-35  
9½" high, one qt.  
white and textured gray  
\$5.00

cups  
M96-28 white  
3" high, 2 ounce  
\$1.50 each

M119-45-S  
Planter or candy dish  
on wire stand  
Black, 6" w. 3" h.  
\$4.50

M119-30  
Ash tray or candy dish  
Brown, 6" w. 2¼" h.  
\$3.50

ALL PRICES SHOWN ARE AT RETAIL



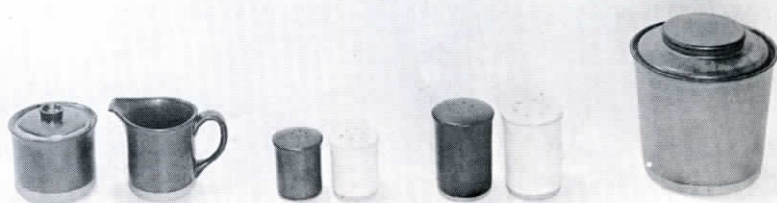
M74-45  
large tumbler  
black, 5½" h.  
16 ounce  
\$1.50 ea.

M69-45  
large pitcher  
black, 12" h.  
one gallon  
\$12.50

M100-30  
medium tumbler  
brown, 4" high  
8 ounce  
\$1.20 ea.

M70-30  
medium pitcher  
brown, 8" h.  
over one quart  
\$6.50

M75-30  
small cup  
brown, 3" h.  
4 ounce  
\$0.80 ea.



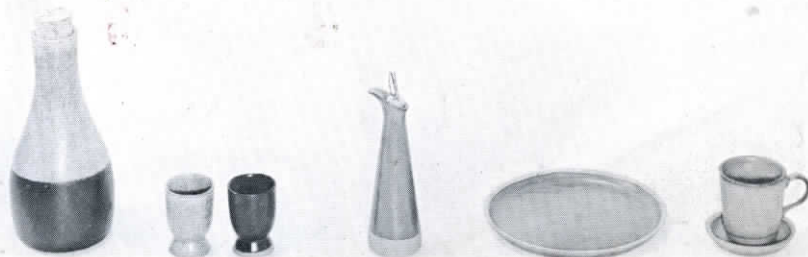
M76-30  
sugar bowl  
brown, 4" h.  
\$3.00

M71-30  
creamer  
brown, 4" h.  
½ pint  
\$3.00

M73-28-45  
salt and pepper  
black and white  
2½" high  
\$1.60 pr.

M72-28-45  
salt and pepper  
black and white  
3½" high  
\$2.00 pr.

M92-31  
jar  
dark green  
6½" h. 6½" d.  
approx. 2 qt.  
\$7.50



M91-35-45  
bottle, 9½" h.  
grey and black  
one quart  
\$5.00

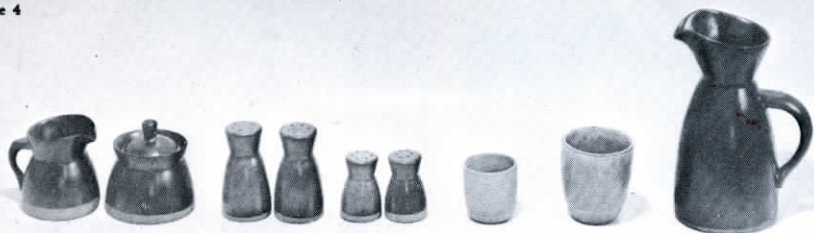
M96-35  
M96-45  
wine cups, grey  
and black, 3" h.  
2 ounce  
\$1.50

M77-32 cruet  
light brown  
7½" high  
\$2.50

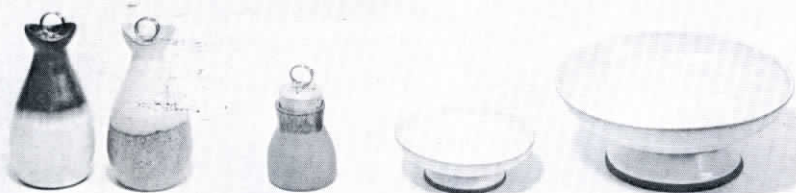
M95-30 plate  
brown, 8" dia.  
\$2.00

M97-98-30  
cup and saucer  
brown, 3" high  
\$2.50

ALL PRICES SHOWN ARE AT RETAIL



- |  |  |   |  |   |  |   |
|--|--|---|--|---|--|---|
| M21-45<br>creamer, black<br>4½" high<br>\$4.00 | M24-45<br>Sugar, black<br>4½" high<br>\$4.00 | M22-30<br>Salt and pepper<br>Brown, 4½" high<br>\$2.00 pair | M23-30<br>Salt and pepper<br>Brown, 3" high<br>\$1.50 pair | M35-32<br>Cup<br>Light brown<br>2½" high<br>\$1.00 each | M34-35<br>Tumbler<br>Textured gray<br>4" high<br>10 ounce<br>\$1.50 each | M17-45<br>Black pitcher<br>10" high<br>1½ quart<br>\$7.50 |
|--|--|---|--|---|--|---|



- |  |   |  |   |
|--|---|--|---|
| M48-30-28 cruet<br>M48-28-30 cruet<br>Brown, white<br>7" high<br>\$3.50 each | M99-35-1 herb jar<br>Glazed textured gray<br>top - bottom unglazed<br>for noting contents<br>3½" h.<br>\$2.00 | M94-28<br>Individual salad bowl<br>White, 6 dia.<br>\$2.50 | M93-28<br>Large salad bowl<br>White, 10" dia.<br>\$9.00 |
|--|---|--|---|



- |  |  |   |   |  |
|--|--|---|---|--|
| M80-32-1<br>Small bottle<br>Light brown<br>glaze at top<br>4" high<br>\$1.10 | M86-45<br>Ash tray, black<br>9" dia.<br>\$3.00 | M7-30-5 plate<br>Brown bands on<br>unglazed backgrou<br>10½" dia.<br>\$5.00 | M7-4 plate<br>Brown majolica design,<br>white background, 10½" d.<br>\$6.00 | M49-45<br>Cigaret box<br>Black glaze<br>Leather lid<br>4" high<br>\$3.50 |
|--|--|---|---|--|



P118-35 tray  
Textured gray  
5" w. 10" l.  
\$4.00



P107-1 tray  
White, incised design  
7½ long  
\$2.50



P107-2 tray  
Blue and brown  
majolica design  
\$2.50



P108-1 tray  
Brown with black  
and white design  
10" long  
\$3.00



P79-1 plate  
Dark brown majolica  
decoration, white  
background  
7½" x 9"  
\$5.00



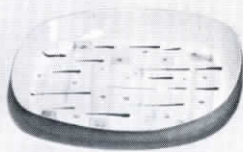
P79-3 plate  
Brown and green  
majolica decoration  
white background  
7½" x 9"  
\$5.00



P79-7 plate  
White majolica  
and sgraffito on  
black background  
7½" x 9"  
\$5.00



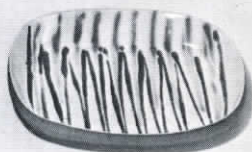
P79-45 plate  
Black glaze  
7½" x 9"  
\$4.00



P78-4 tray  
Blue and green  
majolica design  
11" long, 10" wide  
\$8.00



P78-2 tray  
Brown majolica  
design  
11 long, 10" wide  
\$8.00



P78-1 tray  
Brown and green  
majolica design  
11" long, 10" wide  
\$8.00

ALL PRICES SHOWN ARE AT RETAIL



P89-1 tray  
Grey and brown design  
White background  
10" long  
\$3.50

P10-11-22 tray  
Underglaze design  
6½" long  
\$2.00

P10-11-21 tray  
Underglaze design  
6½" long  
\$2.00

P59-6 tray  
Underglaze design  
8" long  
\$3.00

P37-11 tray  
Underglaze design  
4" square  
\$2.00



P106-1 tray  
brown, spatter  
7" long  
\$2.00

P106-28 tray  
White  
\$1.50

P58-6 tray  
Brown and gray  
majolica design  
6" square  
\$3.00

P58-5 tray  
Brown and gray  
majolica design  
6" square  
\$3.00

P58-45 tray  
Black  
6" square  
\$2.00



P109-5 tray  
Brown and green  
majolica design  
6½" long  
\$2.00

P109-6 tray  
Brown and blue  
majolica design  
6½" long  
\$2.00

P109-30 tray  
Brown 6½" long  
\$1.50

P109-3 tray  
Brown with white  
trailing, 6½" long  
\$2.00

P109-4 tray  
White with brown  
and grey decoration  
6½" long  
\$2.00

P8-11-10 tray  
Underglaze stripes  
3½" dia.  
\$2.00

P8-11-5 tray  
Underglaze design  
3½"  
\$2.00



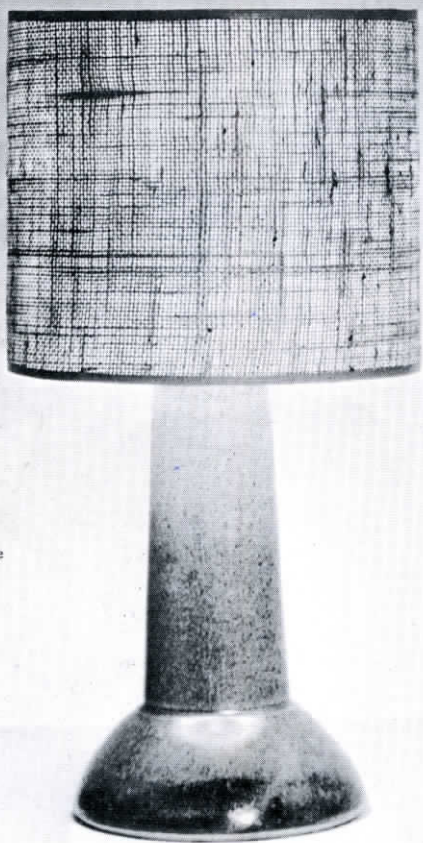


Lamp M113-45-S3  
Height 15½"  
black matte glaze  
one way socket for  
clip shade

Shade No. GS2B  
8" cylinder  
grey goat spun  
clip fitter

Complete \$11.00  
Retail price

This is a special lamp  
is available only in the  
combinations describe  
this page.



8-7-8

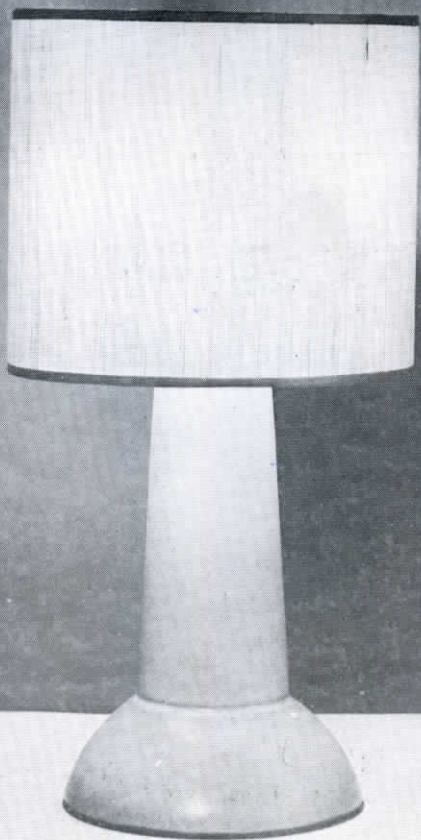
Lamp M113-30-S1  
Height 15 $\frac{1}{2}$ "  
dark brown matte glaze  
one way socket for  
clip shade

Shade No. 205B  
8" cylinder  
tan burlap  
clip fitter

Complete - \$10.00  
Retail price

M13-28-S1  
Height 15½"  
white matte glaze  
one way socket for  
clip shade

Shade No. GS1B  
8" cylinder  
tan goatspun  
clip fitter



Complete - \$10.00  
Retail price

This is a special lamp that is available only in the combinations described on this page.



Lamp M112-39-28  
Height 26 $\frac{1}{2}$ "  
white and brown matte  
glazes  
Bolite harp with three  
way socket  
Retail price - \$25.00

Shade No. GS1B  
17" neo drum  
tan goatspun  
Retail price - \$11.00

Complete - \$36.00



Lamp Mill-47-1  
Height 31½"  
brown matte glaze  
with horizontal incising  
Retail price - \$35.00

Shade No. F8D  
17" - 10" - 18" drum,  
special fitter  
pandanus cloth  
Retail price - \$17.20

Complete - \$52.20

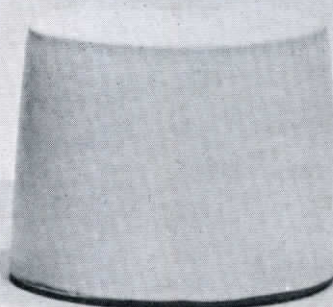
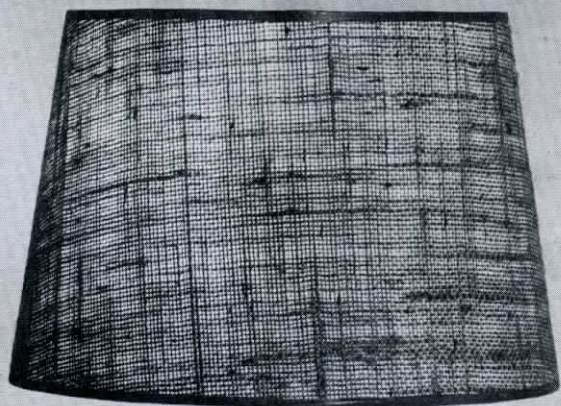


Lamp M105-37-S3  
Height 16"  
black matte glaze  
one way socket for  
clip shade

Shade No. 220B  
10" special drum  
white clare de lune  
clip fitter

Complete - \$10.00  
Retail price

This is a special lamp that  
is available only in the  
combinations described on  
this page.

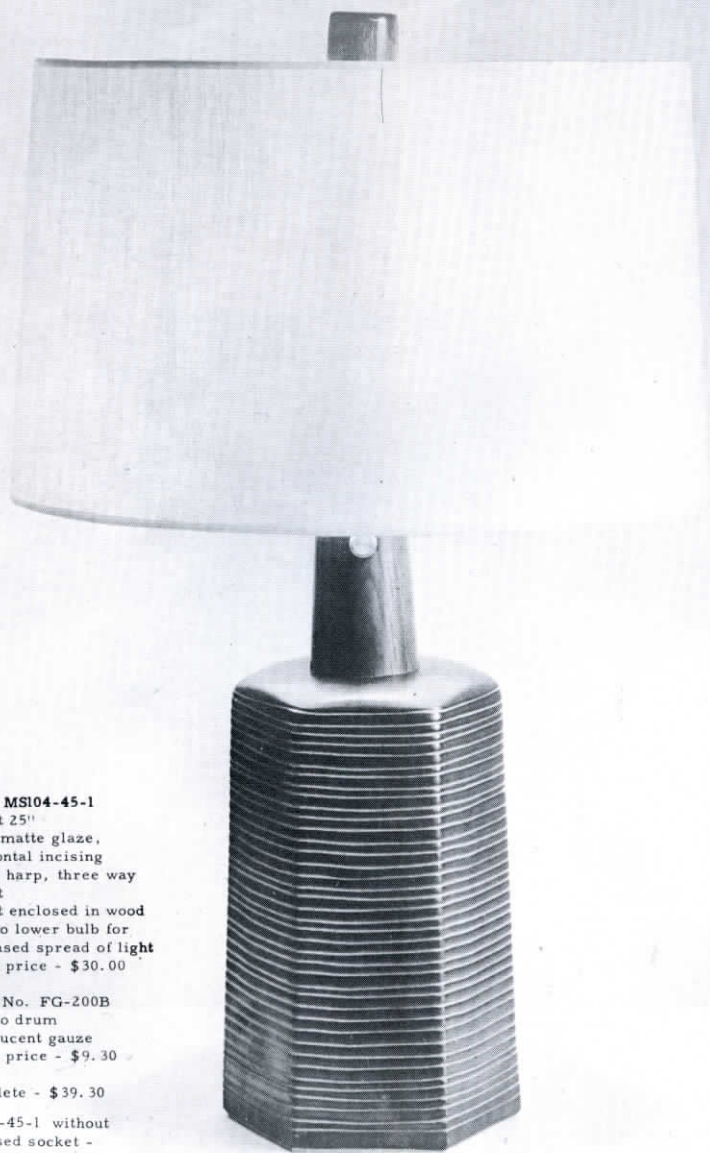


Lamp M105-28-S4  
Height 16"  
white matte glaze  
one way socket for  
clip shade

Shade No. 205B  
10" special drum  
translucent tan burlap  
clip fitter

Complete - \$10.00  
Retail price

This is a special lamp that  
is available only in the two  
combinations described on  
this page.



**Lamp MS104-45-1**  
Height 25"  
black matte glaze,  
horizontal incising  
Bolite harp, three way  
socket  
Socket enclosed in wood  
neck to lower bulb for  
increased spread of light  
Retail price - \$30.00

Shade No. FG-200B  
16" neo drum  
translucent gauze  
Retail price - \$9.30

Complete - \$39.30  
(M104-45-1 without  
enclosed socket -  
lamp only \$25.00)

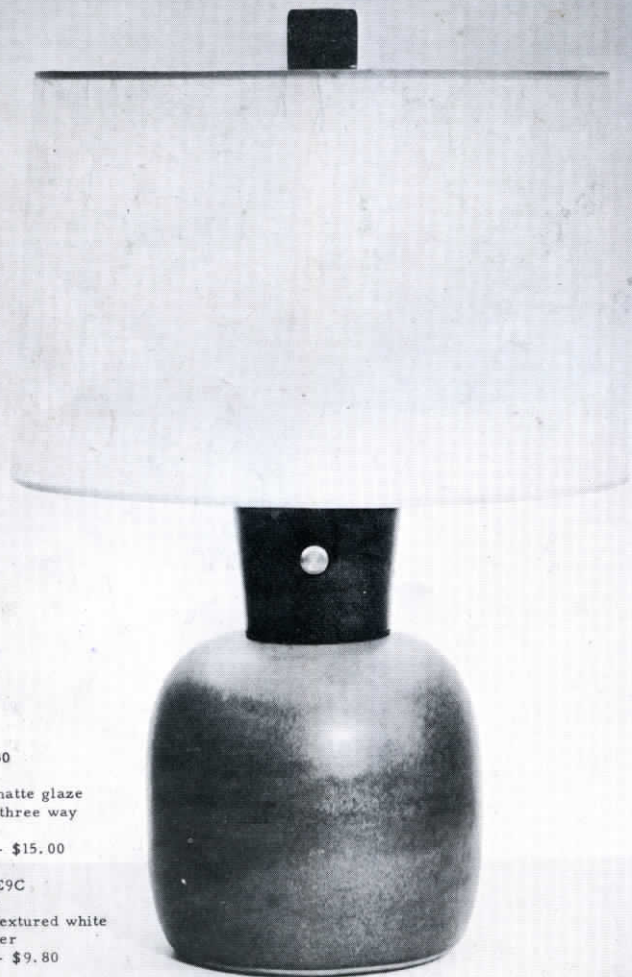




Lamp M104-32  
Height 25"  
light brown matte glaze  
Bolite harp, three way  
socket  
Retail price - \$20.00

Shade No. SN-K-05-1-D  
16" neo drum  
light brown English  
cockerell paper, opaque  
Retail price - \$14.60

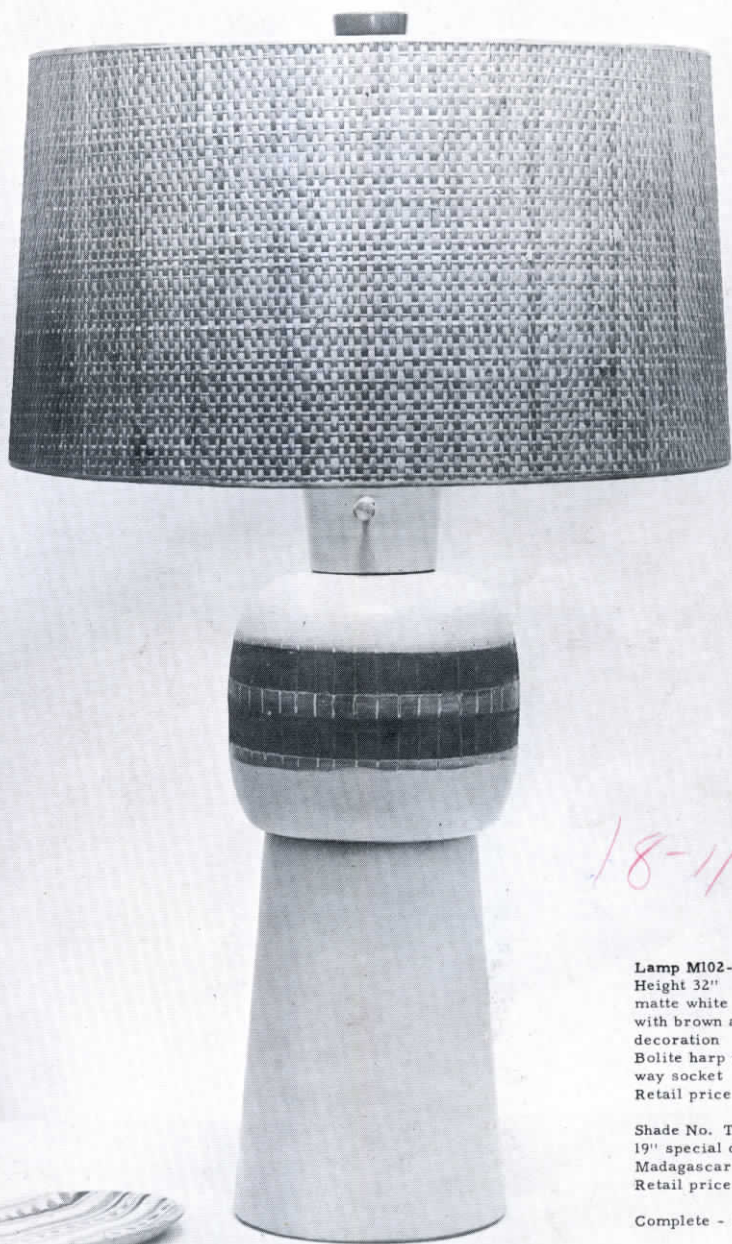
Complete - \$34.60



Lamp M103-30  
Height 19½"  
dark brown matte glaze  
Bölite harp, three way  
socket  
Retail price - \$15.00

Shade No. FE9C  
14" neo drum  
dragonfoot, textured white  
Japanese paper  
Retail price - \$9.80

Complete - \$24.80



18-11-19

Lamp M102-51-1  
Height 32"  
matte white  
with brown and tan  
decoration  
Bolite harp with three  
way socket  
Retail price - \$40.00

Shade No. T1C  
19" special drum  
Madagascar tulle  
Retail price - \$16.50

Complete - \$56.50



Lamp M102-45-30  
Height 32"  
dark brown and black  
matte glazes  
Bolite harp with three  
way socket  
Retail price - \$35.00

Shade No. FE8D  
19" special drum  
translucent Japanese  
grasscloth  
Retail price - \$20.60

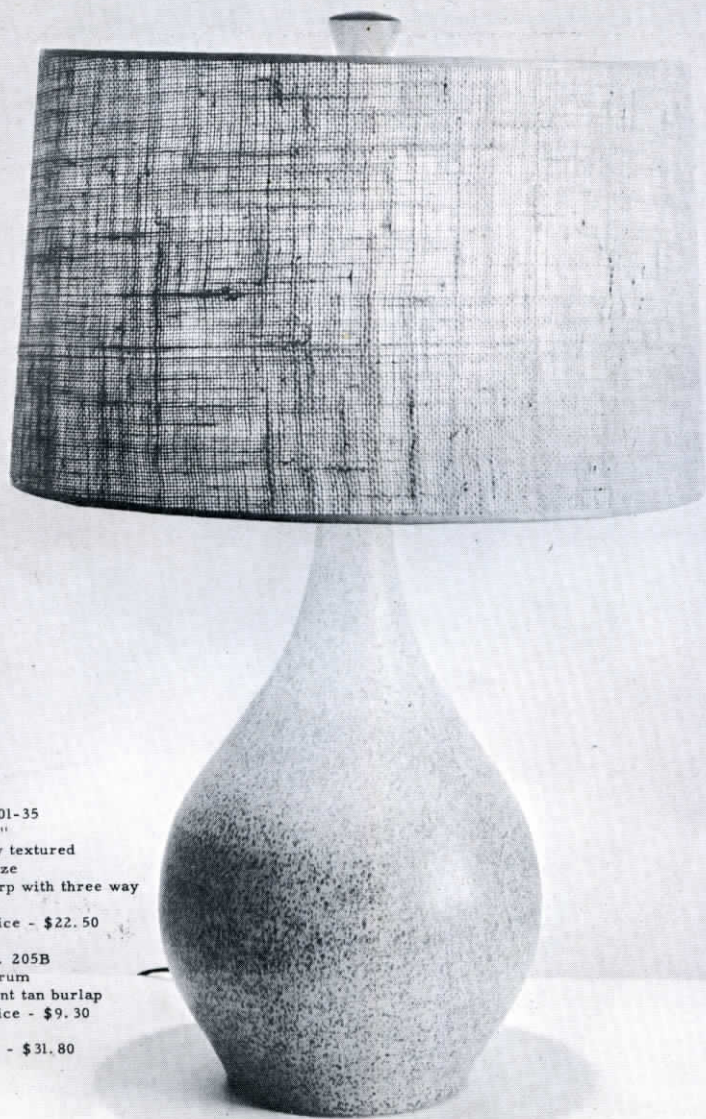
Complete - \$55.60



Lamp M101-51-1  
Height 25"  
white matte glaze,  
horizontal striping  
Bolite harp with three  
way socket  
Retail price - \$27.50

Shade No. GS1B  
16" neo drum  
tan goatspun  
Retail price - \$9.30

Complete - \$36.80



Lamp M101-35  
Height 25"  
light grey textured  
matte glaze  
Bolite harp with three way  
socket  
Retail price - \$22.50

Shade No. 205B  
16" neo drum  
translucent tan burlap  
Retail price - \$9.30

Complete - \$31.80



Lamp M85-39-1  
Height 32"  
brown matte  
incised decoration  
Bolite harp, three way  
socket  
Retail price - \$40.00

Shade No. GS1B  
17" - 11" - 18" drum  
tan goatspun  
Retail price - \$11.00

Complete - \$51.00



Lamp M84-37  
Height 29"  
black matte glass  
Bolite harp, three way  
socket  
Retail price - \$20.00

Shade No. GS2B  
14" cylinder, 10½" side  
Grey goatspun  
Retail price - \$7.80

Complete - \$27.80

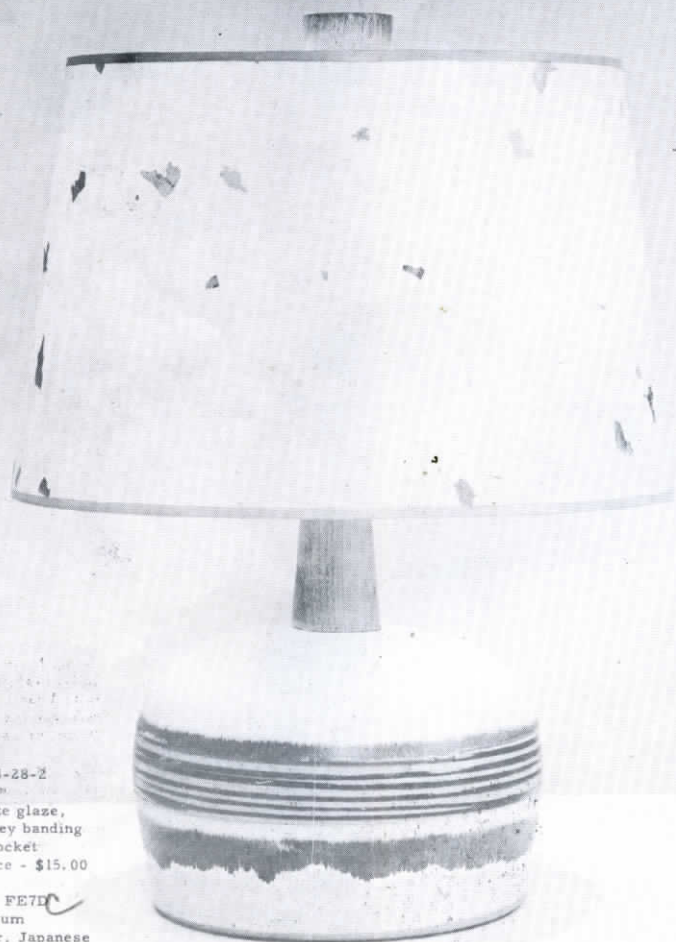




Lamp M83-47  
Height 16½"  
dark brown matte glaze  
one way socket  
Retail price - \$12.50

Shade No. FE10D  
13" new drum  
colorful printed Japanese  
paper  
Retail price - \$12.40

Complete - \$24.90



Lamp M83-28-2  
Height 16½"  
white matte glaze,  
tan and grey banding  
one way socket  
Retail price - \$15.00

Shade No. FE7D  
13" new drum  
bark paper, Japanese  
Retail price - \$12.40

Complete - \$27.40

490



Lamp M81-45-1  
Height 29"  
black matte glaze,  
vertical incising  
Bolite harp, three way  
socket  
Retail price - \$35.00

Shade No. FE8D  
18" deep decor drum  
translucent Japanese  
grasscloth  
Retail price - \$17.20

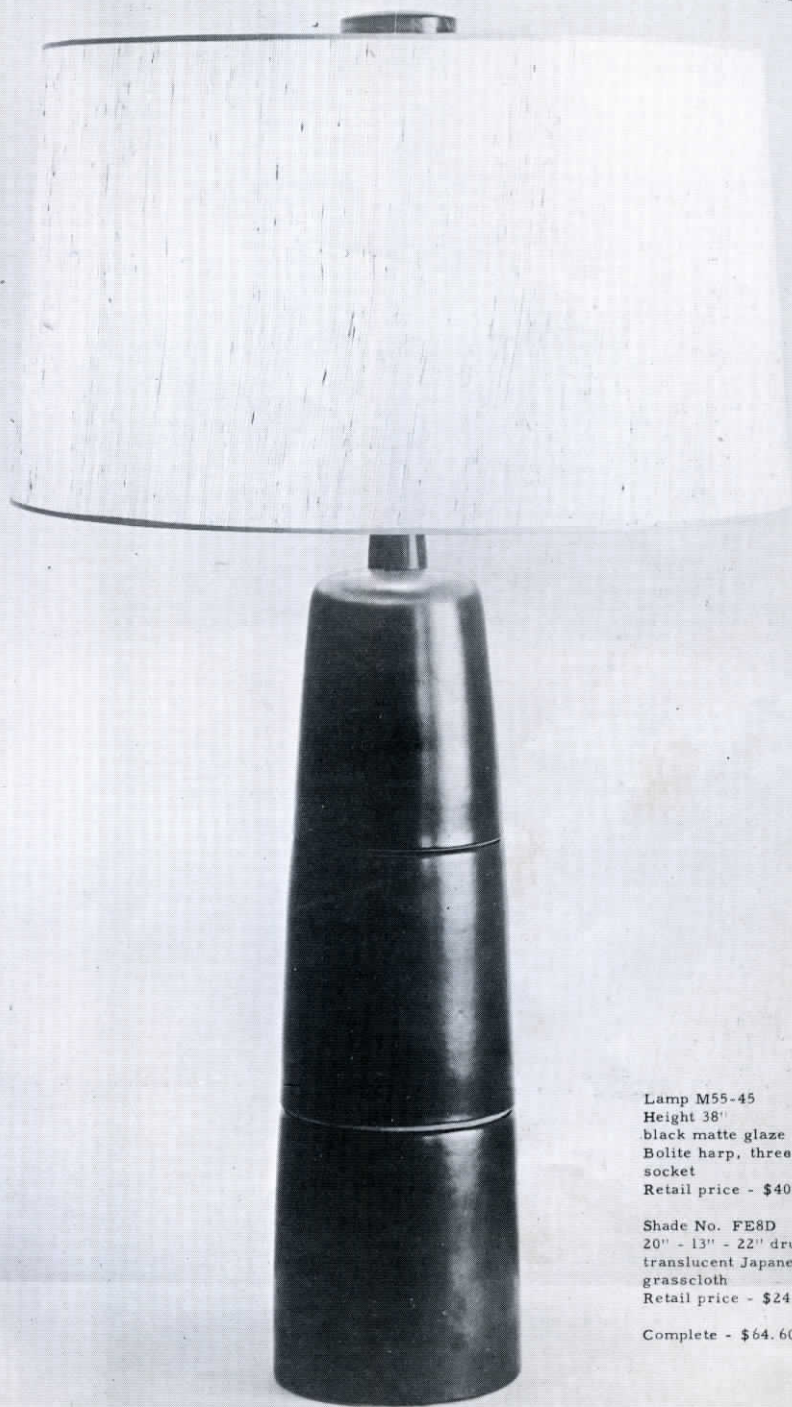
Complete - \$52.20



Lamp M56-51-3  
Height 19½"  
white matte  
light blue decoration  
one way socket  
Retail price - \$15.00

Shade No. LW7508C  
13" new drum  
light blue basketweave  
Retail price - \$9.80

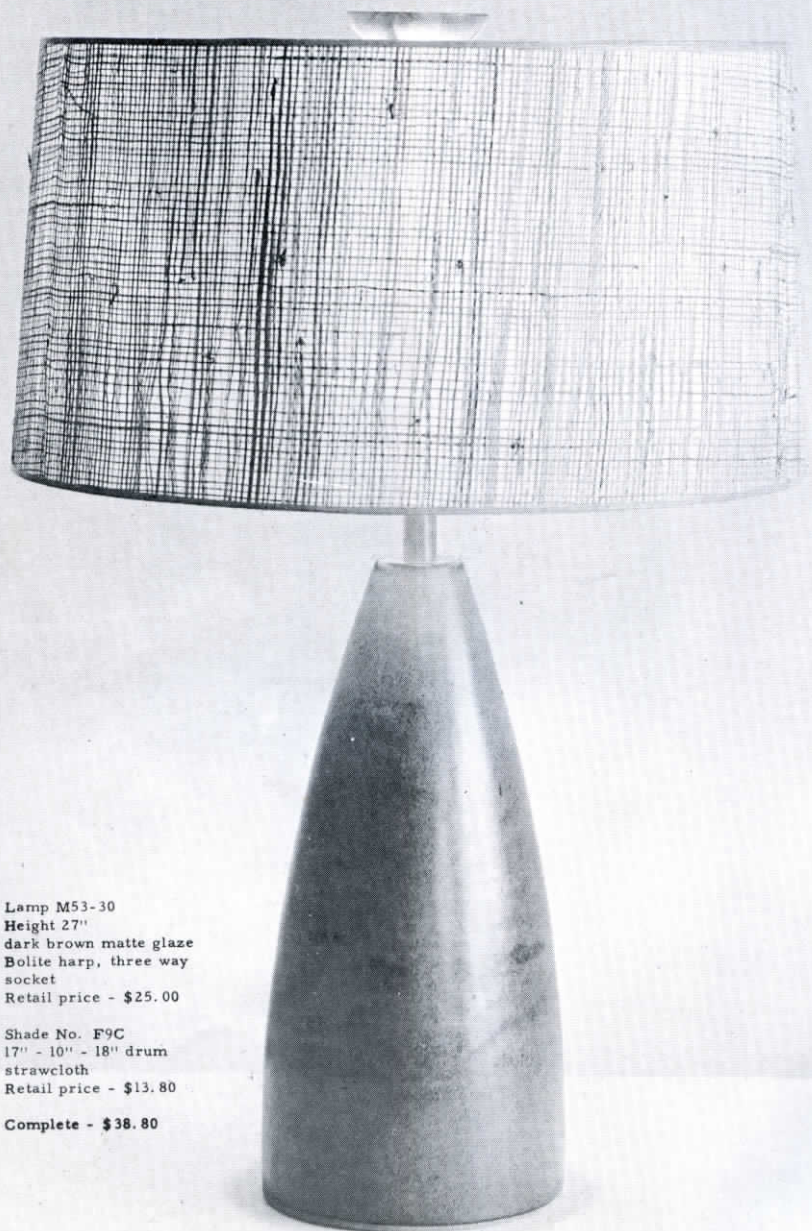
Complete - \$24.80



Lamp M55-45  
Height 38"  
black matte glaze  
Bolite harp, three way  
socket  
Retail price - \$40.00

Shade No. FE8D  
20" - 13" - 22" drum  
translucent Japanese  
grasscloth  
Retail price - \$24.60

Complete - \$64.60



Lamp M53-30  
Height 27"  
dark brown matte glaze  
Bolite harp, three way  
socket  
Retail price - \$25.00

Shade No. F9C  
17" - 10" - 18" drum  
strawcloth  
Retail price - \$13.80

Complete - \$38.80



Lamp M51-39  
Height 22 $\frac{1}{2}$ "  
brown  
Bolite harp, three way  
socket  
Retail price - \$25.00

Shade No. FE6D  
15" modern drum  
bark paper  
Retail price - \$14.60

Complete - \$39.60



Lamp M51-23-4  
Height 22½"  
shiny white glaze with  
blue and tan banding  
Bolite harp, three way  
socket  
Retail price - \$30.00

Shade FG210C  
15" modern drum  
Natural gauze over  
moonskin  
Retail price - \$11.60



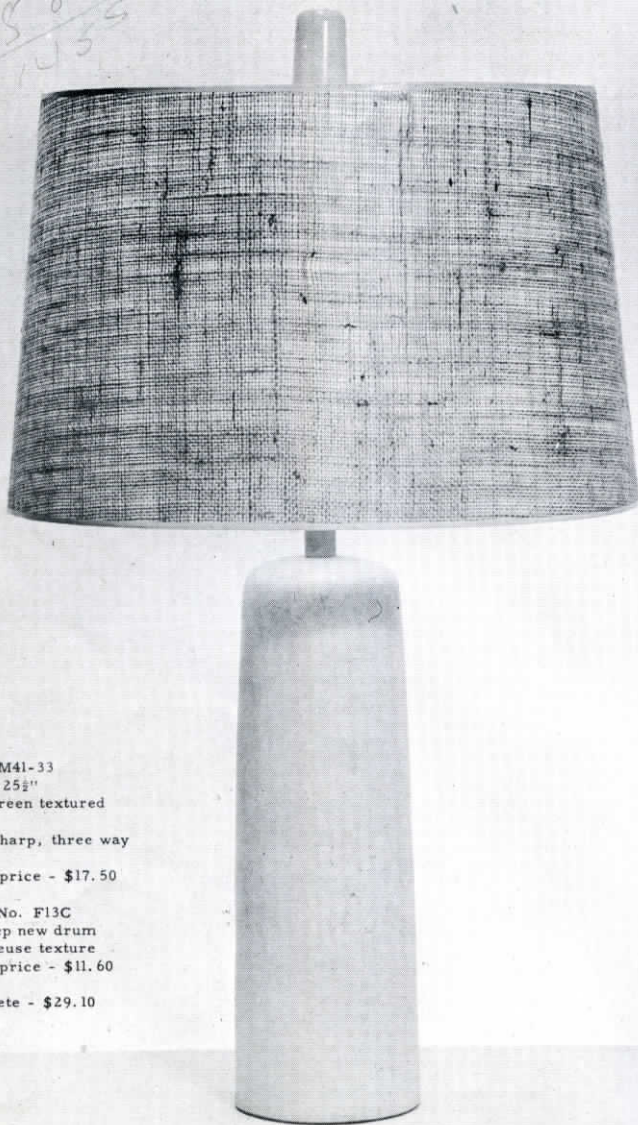


Lamp M50-28-37-2  
Height 28"  
white matte glaze,  
black bands  
Bolite harp, three wa  
socket  
Retail price - \$35.00

Shade No. F4D  
17" - 10" - 18" drum  
white linen  
Retail price - \$17.20

Complete - \$52.20

875  
580  
-----  
1235



Lamp M41-33  
Height 25½"  
light green textured  
glaze  
Bolite harp, three way  
socket  
Retail price - \$17.50

Shade No. F13C  
16" deep new drum  
chartreuse texture  
Retail price - \$11.60

Complete - \$29.10

In numbering the ware, the first number is the form, the second the glaze, and the third number the decoration. The glaze numbers and their corresponding colors are listed below, and may be applied to any UNDECORATED piece in this folder, if a change in glaze is desired.

#### MATTE GLAZES

- 28 white
- 30 dark brown
- 31 dark green (smoke)
- 32 light brown
- 33 textured green
- 35 textured gray
- 45 black

*numerical order*

#### INDEX

	Page No.
General Information	1
Accessories	2
Accessories	3
Accessories	4
Trays	5
Trays	6
LAMP NO. M113-45-S3	7
M113-30-S1	8
M113-28-S2	9
M112-39-28	10
M111-47-1	11
M105-37-S3	12
M105-28-S4	13
MS104-45-1	14
M104-32	15
M103-30	16
M102-51-1	17
M102-45-30	18
M101-51-1	19
M101-35	20
M85-39-1	21
M84-37	22
M83-47	23
M83-28-2	24
M81-45-1	25
M56-51-3	26
M55-45	27
M53-30	28
M51-39	29
M51-23-4	30
M50-28-37-2	31
M41-33	32

MARSHALL STUDIOS, INC.  
VEEDERSBURG, INDIANA

Sec. 34.66 P. L. & R.