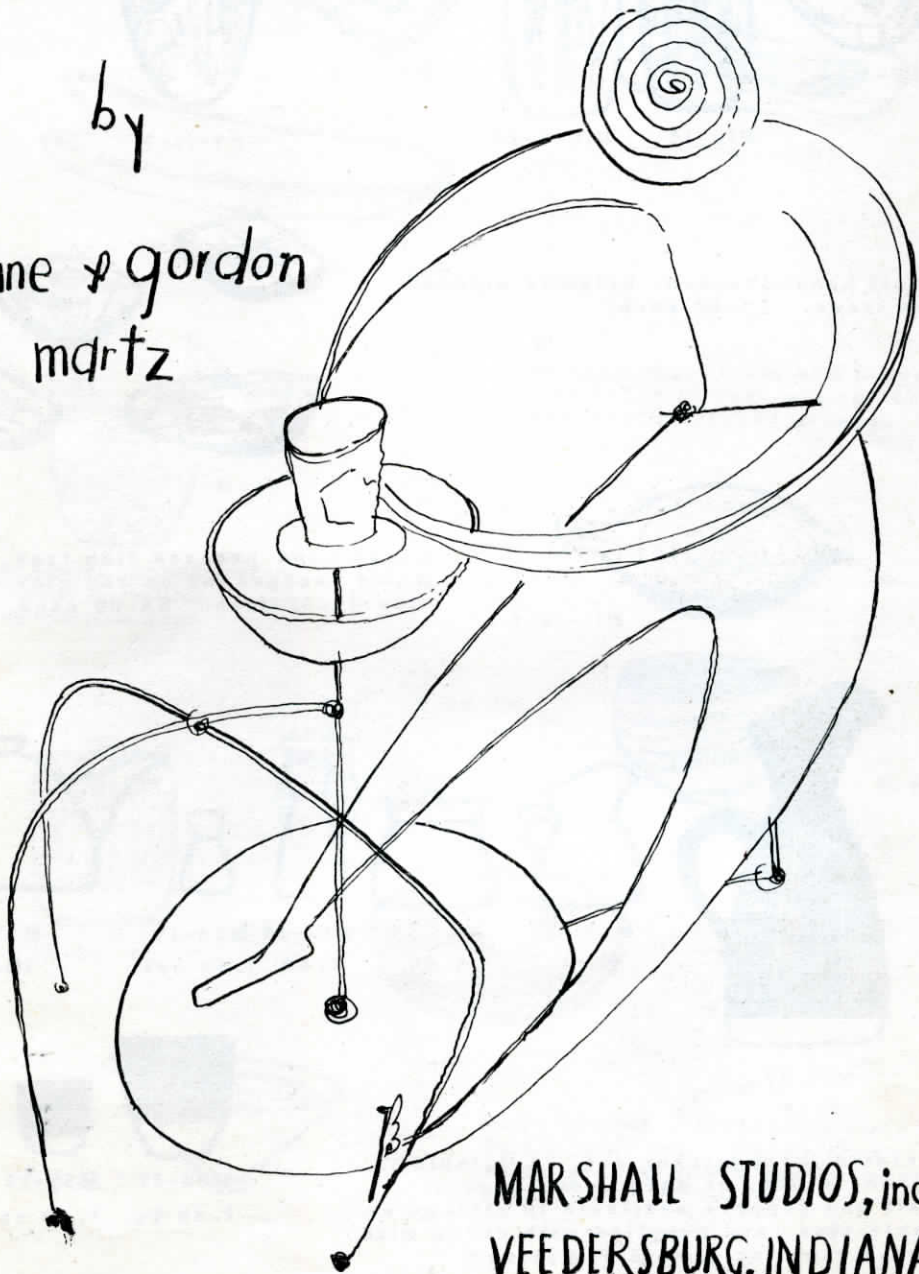


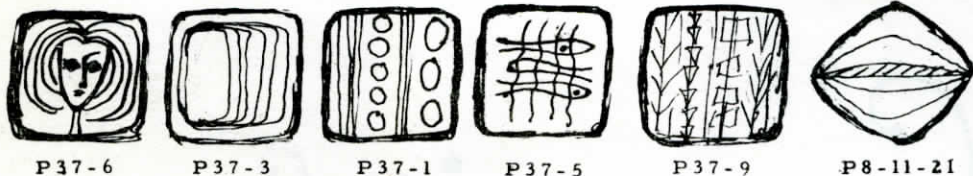
# Ceramics

by

jane & gordon  
martz



MARSHALL STUDIOS, inc.  
VEEDERSBURG, INDIANA



P37-6

P37-3

P37-1

P37-5

P37-9

P8-11-21



P8-11-2



P10-13-7



P10-8-20

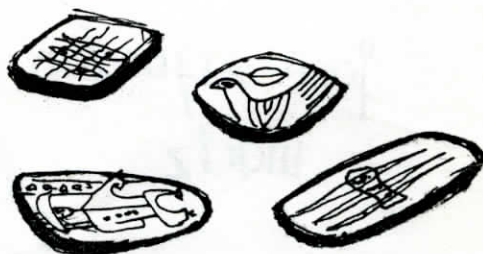


P8-11-4



P9-11-5

Small hand-pressed, brightly colored ash trays. \$2.00 each.



P11-14-8

Large hand-pressed fish tray. White background on red clay with blue decoration. \$4.00 each.



M17-17

7.50



M21-19

4.00



M24-19

4.00



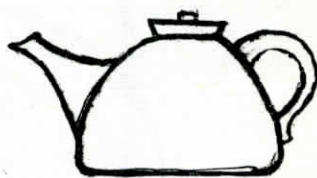
M22-19

1.00



M23-19

1.50 set



M36-17

10.00

Related form pitcher set. Available in black, white, or dark brown glazes. Salt and peppers available in kitchen or table size, and supplied with corks with brass ring for simple removing.



M34-17

1.50 ea.



M35-19

1.00 ea.

M3 3.50



M1 5.00



M6 7.50



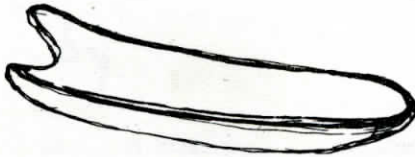
M4 7.50



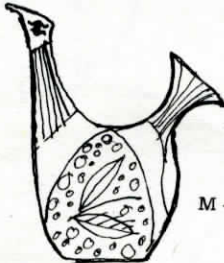
M5 3.50



P46 4.00



M12 15.00



M-45

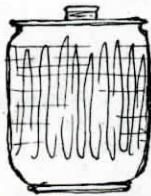
Molded free-form ash trays.  
Available in tan, green, blue,  
and earth colored glazes.

Two spouted, molded pitcher.  
7.50 with decoration.  
6.00 with plain glaze.

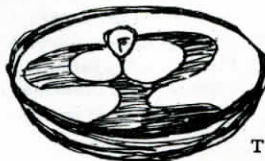
T15 5.00



T44 5.00



T38-20 12.00



T40 8.00



T18-12-12 5.00

Hand thrown individual pieces.  
Small jam jars. Candy jars.  
Plain glazed bowls and decorated  
bowls.



M44-6 5.00



M32-26 5.00



M42-17 5.00

Any of the pieces illustrated may be had in a variety of glazes: blues, browns, greens, tans, and earth colors. The decorated trays are hand painted in underglaze on a white background, very colorful in feeling. All thrown pieces are individually made, of course, and identical duplication of samples shown cannot be guaranteed.

All ware is fired to a very high temperature, forming a hard and durable clay. The glazes are selected with an attempt to fit the surface quality of the piece to the feeling of the form.

**ALL PRICES ARE QUOTED AT RETAIL**

Spring 1952